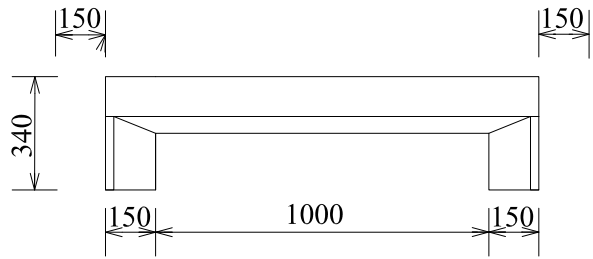
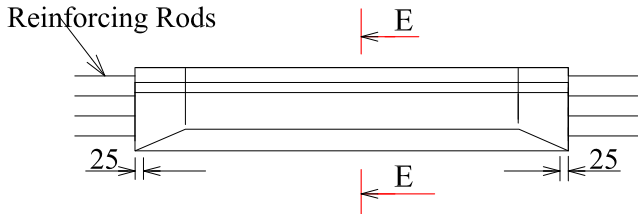


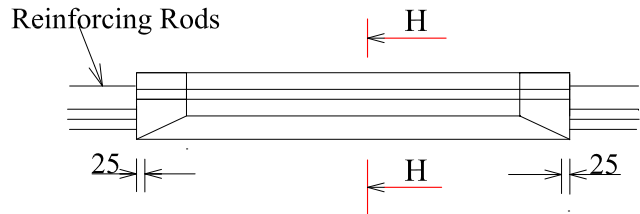
ELEVATION



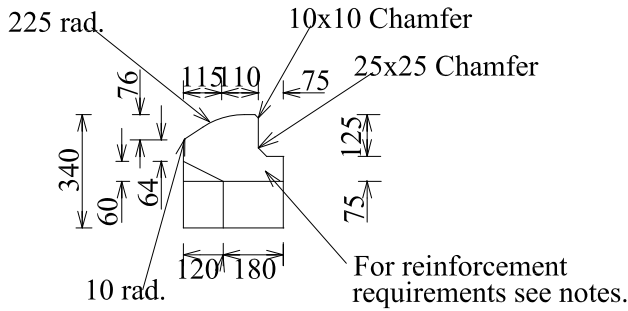
ELEVATION



PLAN

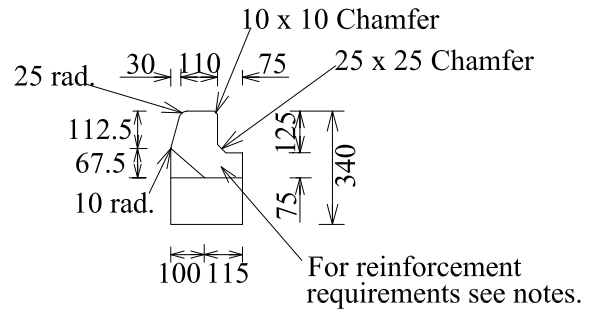


PLAN



SECTION E-E

SM TYPE LINTELS



SECTION H-H

B TYPE LINTELS

NOTES

1. Standard Lintels are required to support a Test Load of 100kn in accordance with Vicroads Interim Test Method for Test Loading Pit Covers, Lintels and Lids.
2. Steel Reinforcement shall comply with section 611 of Vicroads specification
3. Concrete shall be Grade N40 or Higher complying with Vicroads Requirements.
4. Minimum Clear Cover to Reinforcement 25mm. for Precast Concrete Lintels.