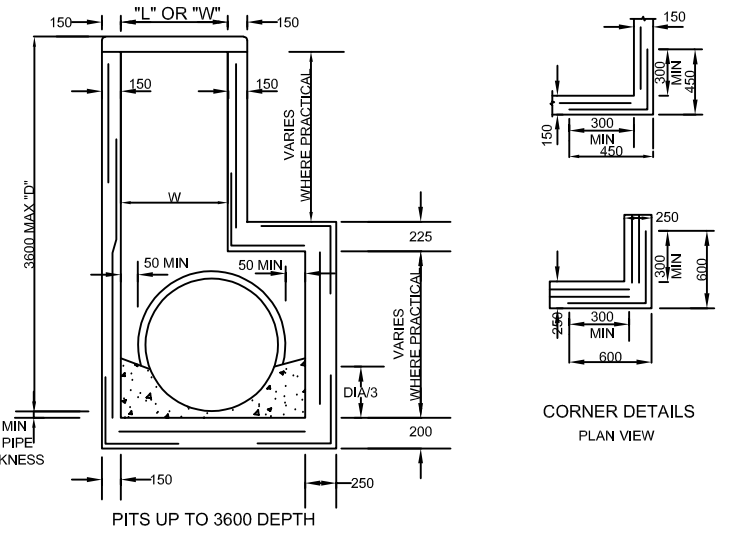
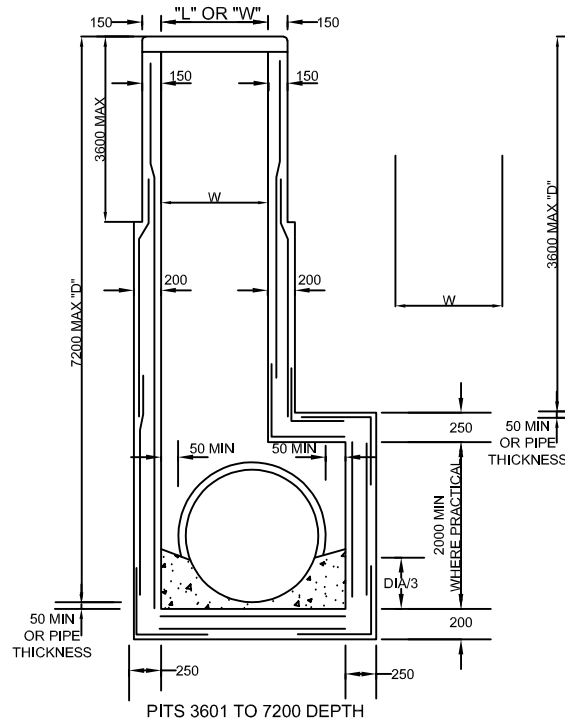
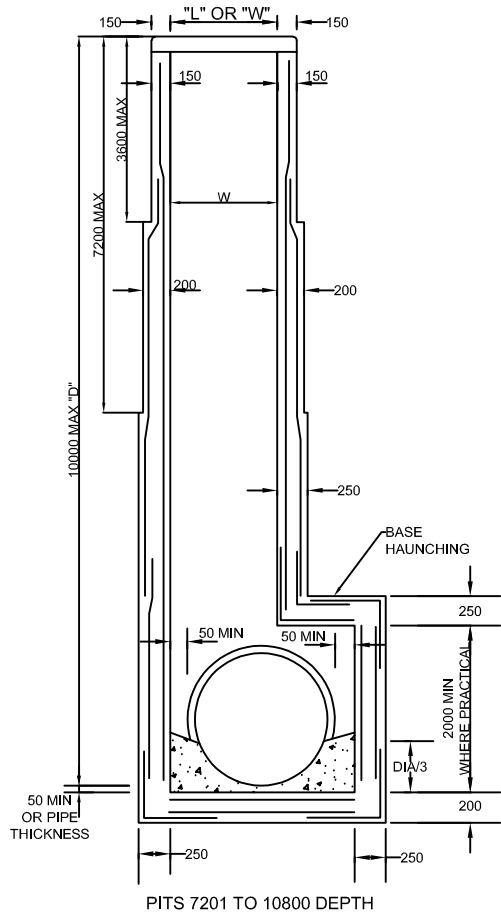


STANDARD DRAWING

# HAUNCHED PITS



**NOTES**

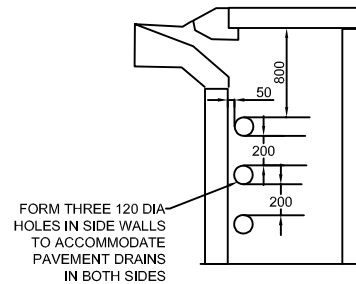
1. MINIMUM PIT SIZES:

DEPTH	MINIMUM INTERNAL DIMENSIONS - W	
	PITS IN TRAFFIC LANES	PITS IN OTHER LOCATIONS
0 - 1000	600 X 600	450 X 450
1000 - 1700	900 X 600	900 X 600
1700 UPWARDS	900 X 900	900 X 900

PITS 1200 WIDE REQUIRING HEAVY DUTY LIDS ARE TO HAVE SPLIT LIDS ACCESS FROM TOP OF PIT CAN BE REDUCED TO SUITE 900x600 HEAVY DUTY LID WITH APPROVAL FROM COUNCIL ENGINEER.

- PITS WITH HAUNCHING IN TWO DIRECTIONS REQUIRE SPECIAL STRUCTURAL DESIGN AS THE STANDARD DETAILS DO NOT APPLY.
- FOR DETAILS OF SPECIFIC PITS REFER TO PIT SCHEDULE
- PIT REINFORCEMENT DETAILS ARE SHOWN IN DIAGRAMS. FABRIC IN SHAFT SHALL HAVE THE MAIN BARS POSITIONED HORIZONTALLY. LAPS TO BE 300MIN. CLEAR COVER TO BE 50 MIN. CORNER RETURN REINFORCEMENT MAY FABRIC OR EQUIVALENT BARS. STEEL REINFORCEMENT AS PER AS 4671:2019. CONCRETE GRADE VR330/32 TO SECTION 610 OF VICROADS' SPECIFICATION.
- PITS DEEPER THAN 1000 SHALL BE FITTED WITH STEP IRONS. REFER SD 1001.
- FOR TOP OF PIT DETAILS, REFER PIT SCHEDULE AND RELEVANT STANDARD DRAWINGS.
- PRECAST UNITS MAY BE INSTALLED TO THE MANUFACTURERS DETAILS. THE DESIGN IS TO COMPLY WITH THE AUSROADS BRIDGE DESIGN CODE 1992 AND THE FOLLOWING ADDITIONAL REQUIREMENTS:
  - COMBINED FACTORED LATERAL PRESSURE OF ANY STATE SO BE NOT LESS THAN 25kPa
  - ADEQUATE DRAINAGE SHALL PROVIDED FOR PIT WALLS TO AVOID HYDROSTATIC PRESSURE
  - VERTICAL LOAD OF 210kN APPLIED ANYWHERE ON PIT
  - MINIMUM REINFORCEMENT AREA TO BE 150mm<sup>2</sup>/m
  - CONCRETE SHALL COMPLY WITH SECTION 610 VICROADS SPECIFICATION
- SUBSURFACE DRAIN HOLES TO BE SEALED IF NOT USED

PIT DEPTH D	REINFORCEMENT
UP TO 1700	NIL
1700 TO 3600	F92



PRECAST PIT

DATE REVIEWED  
MAY 2022

SCALE  
NTS

DRAWING NO.  
SDI028