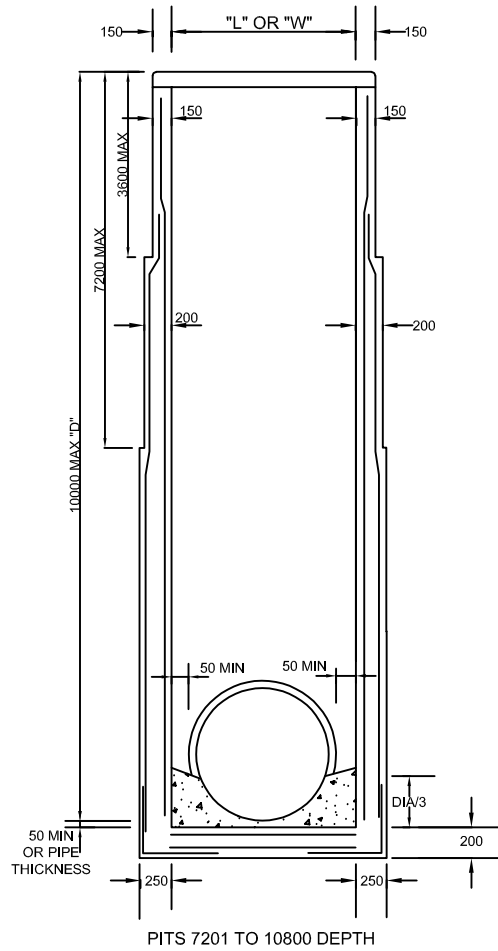
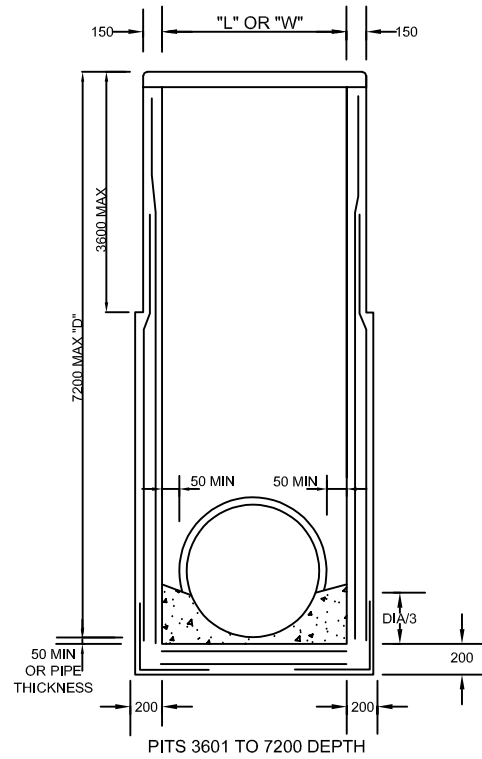


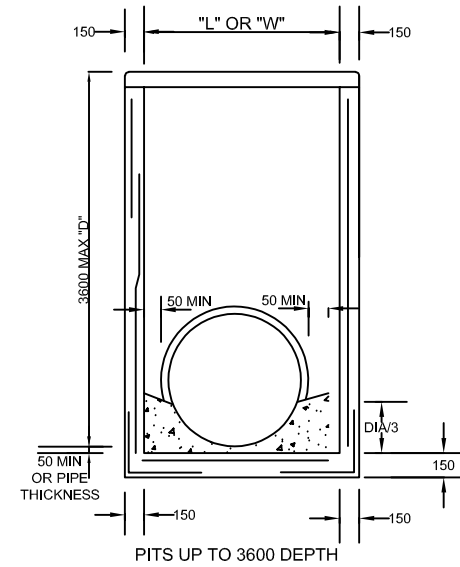
UNHAUNCHED
PITS



PITS 7201 TO 10800 DEPTH



PITS 3601 TO 7200 DEPTH



PITS UP TO 3600 DEPTH
NOTES

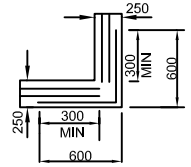
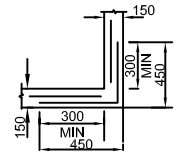
1. MINIMUM PIT SIZES:

DEPTH	MINIMUM INTERNAL DIMENSIONS	
	PITS IN TRAFFIC LANES	PITS IN OTHER LOCATIONS
0 - 1000	600 X 600	450 X 450
1000 - 1700	900 X 600	900 X 600
1700 UPWARDS	900 X 900	900 X 900

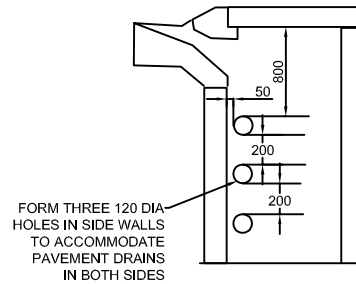
PITS WITH AN INTERNAL DIMENSION OF 1200 TO BE FITTED WITH SPLIT HEAVY DUTY LIDS.

ACCESS FROM TOP OF PIT CAN BE REDUCED TO SUITE 900x600 HEAVY DUTY LID WITH APPROVAL FROM COUNCIL ENGINEER.

- PITS WITH HAUNCHING IN TWO DIRECTIONS REQUIRE SPECIAL STRUCTURAL DESIGN. THE STANDARD DETAILS DO NOT APPLY.
- FOR DETAILS OF SPECIFIC PITS REFER TO PIT SCHEDULE
- PIT REINFORCEMENT DETAILS ARE SHOWN IN TABLE. FABRIC IN SHAFT SHALL HAVE THE MAIN BARS POSITIONED HORIZONTALLY. LAPS TO BE 300MIN. CLEAR COVER TO BE 50 MIN. CORNER RETURN REINFORCEMENT MAY FABRIC OR EQUIVALENT BARS. BARS GRADE 400Y TO AS 1302/1991. CONCRETE GRADE VR330/32 TO SECTION 610 OF VICROAD'S SPECIFICATION.
- PITS DEEPER THAN 1000 SHALL BE FITTED WITH STEP IRONS. REFER SD 1001.
- FOR LID TYPE DETAILS, REFER PIT SCHEDULE AND RELEVANT STANDARD DRAWINGS.
- PRECAST UNITS MUST BE CONSTRUCTED TO THE MANUFACTURERS DETAILS. THE DESIGN IS TO COMPLY WITH THE AUSTRROADS BRIDGE DESIGN CODE 1992 AND THE FOLLOWING ADDITIONAL REQUIREMENTS:
 - COMBINED FACTORED LATERAL PRESSURE OF ANY STATE SO BE NOT LESS THAN 25kPa
 - ADEQUATE DRAINAGE SHALL BE PROVIDED FOR PIT WALLS TO AVOID HYDROSTATIC PRESSURE
 - VERTICAL LOAD OF 210kN APPLIED ANYWHERE ON PIT
 - MINIMUM REINFORCEMENT AREA TO BE 150mm²/m
 - CONCRETE SHALL COMPLY WITH SECTION 610 VICROADS SPECIFICATION
- SUBSURFACE DRAIN HOLES TO BE SEALED IF NOT USED



CORNER DETAILS
PLAN VIEW



PRECAST PIT

PIT DEPTH D	REINFORCEMENT
UP TO 1700	NIL
1700 TO 3600	F92

DRAWING NO.

SD1027

SCALE

NTS

DATE REVIEWED

MAY 2022