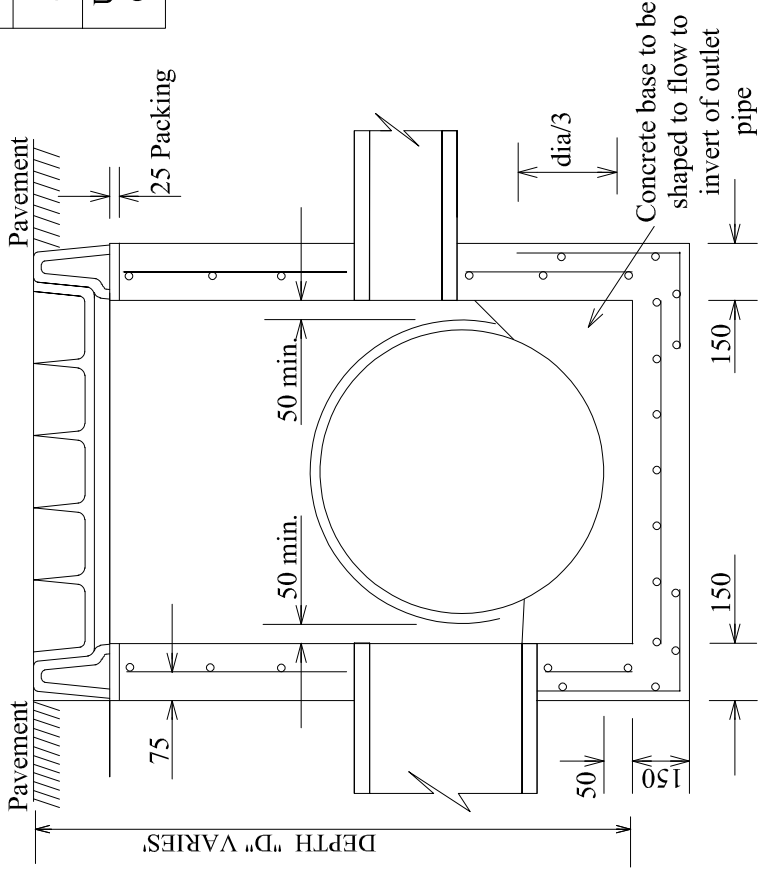
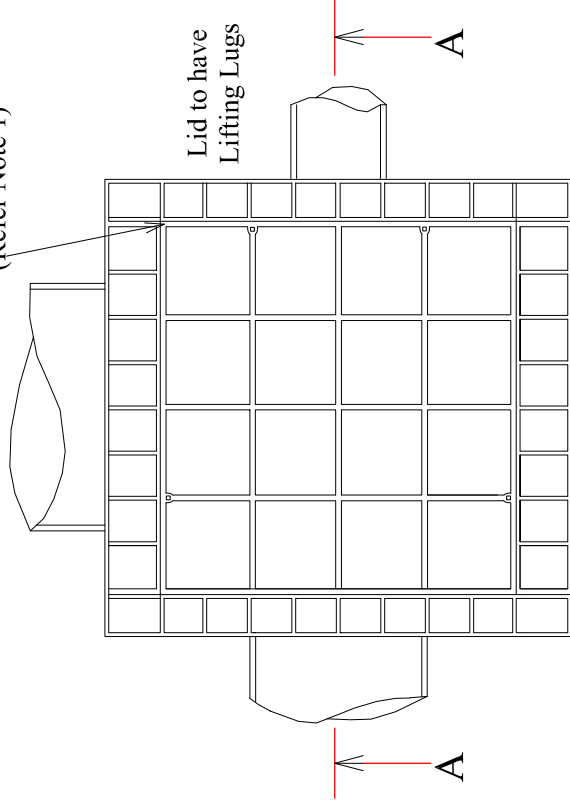


Reinforcement Details	
Pit Depth "D" mm	Reinforcement
Up to 1700	Nil
Over 1700	F92



SECTION A-A

Heavy Duty Cast Iron Cover
(Refer Note 1)



PLAN

NOTES

1. Heavy Duty Cast Iron Covers and Frames are to be used for Pits located in or within 300mm of Traffic Lanes.
2. Each Cover shall have weight and capacity clearly imprinted on the Top.
3. Frames must have adequate Anchorage to insure that they do not come loose under Traffic.
4. Use 750 x 750 Shaft size for Junction Pits located in Traffic Lanes.
5. Pits deeper than 1000 shall be fitted with Step Irons. (Refer SD 1001)
6. Precast Pits with thinner walls and less steel may be accepted where the manufacturer can demonstrate that they have adequate capacity to support a combination of the following loads :
Lateral Loads -
 - Earth pressure with 210 KN surcharge
 - Hydrostatic pressure.
 - Compaction pressure 25 kPa (min.)
 Vertical load - 210 KN.
7. Concrete infill for cover and frame shall be 30MPa at 28 days, with 12 max. size aggregate. Tamp and pencil vibrate.
8. Cast Iron cover and frame to be installed as one unit.
9. Haunching may be required for pipes over 450 dia. Refer to pit schedule for sizes of specific pits.
10. All pit grates to Australian Standards.