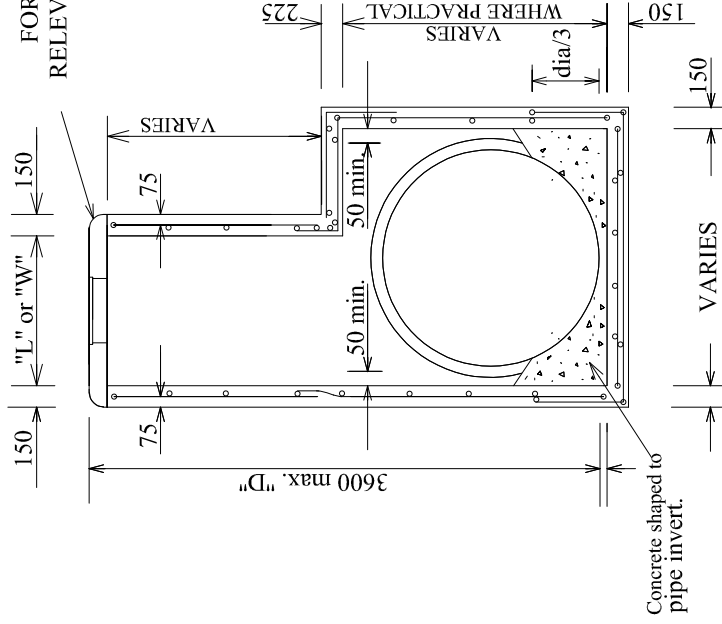


PITS - UP TO 3600 DEPTH

NOTES:

1. MEDIUM DUTY LIDS CAN BE USED ON PITS WITHIN THE ROAD RESERVE AND OUTSIDE TRAFFIC LANES
2. HAUNCHING MAY BE REQUIRED FOR PIPES OVER 450mm DIAMETER. REFER TO PIT SCHEDULE FOR SIZES OF SEPCIFIC PITS.
3. PITS WITH HAUNCHING IN TWO DIRECTION REQUIRE SPECIFIC STRUCTURAL DESIGN.
4. PIT REINFORCEMENT DETAILS ARE SHOWN IN TABLE BELOW AND IMAGE. FABRIC IN SHAFT TO BE POSITIONED HORIZONTALLY. CLEAR COVER TO BE 50mm. CONCRETE TO BE STRENGTH OF 32MPa AFTER 28 DAYS
5. PITS DEEPER THAN 1000mm TO BE FITTED WITH STEP IRONS. MINIMUM SIZES NOMINATED IN SD1028
6. PRECAST PITS WITH THINNER WALLS AND LESS STEEL MAY BE ACCEPTED WHERE MANUFACTURER CAN DEMONSTRATE THAT THE PITS HAVE ADEQUATE CAPACITY TO SUPPORT A COMBINATION OF THE FOLLOWING LOADS:
 LATERAL LOADS - EARTH PRESSURE WITH 210KN SURCHARGE

- HYDROSTATIC PRESSURE
- COMPACTION PRESSURE 25kPa MIN
- VERTICAL LOAD OF 210kN



HAUNCHED PITS - UP TO 3600 DEPTH

REINFORCEMENT DETAILS

PIT DEPTH "D" mm	REINFORCEMENT
UP TO 1700	NIL
OVER 1700	F 92

