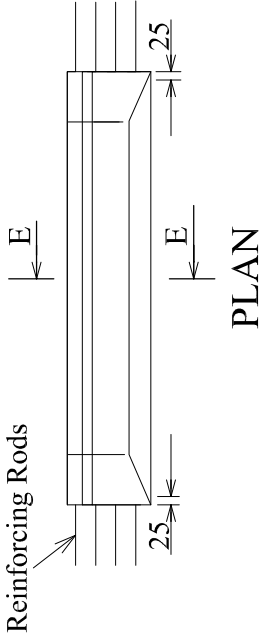
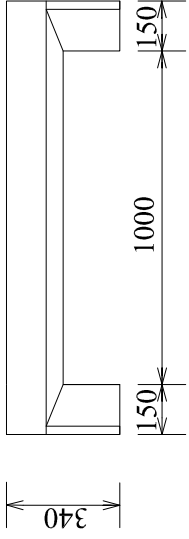


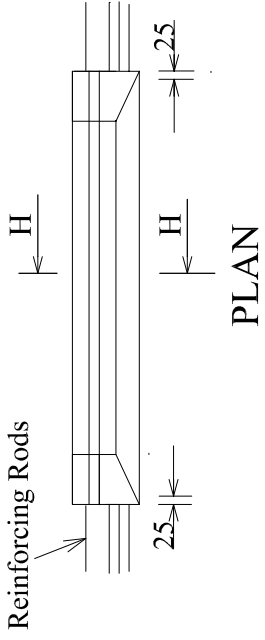
ELEVATION



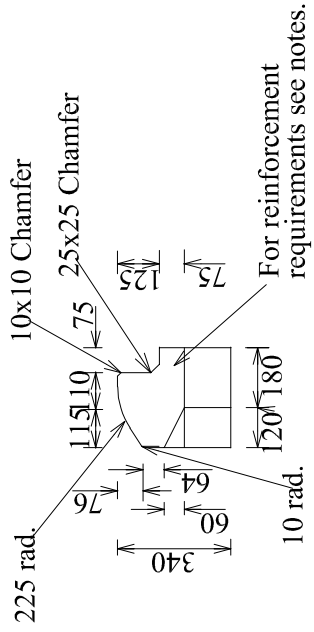
PLAN



ELEVATION

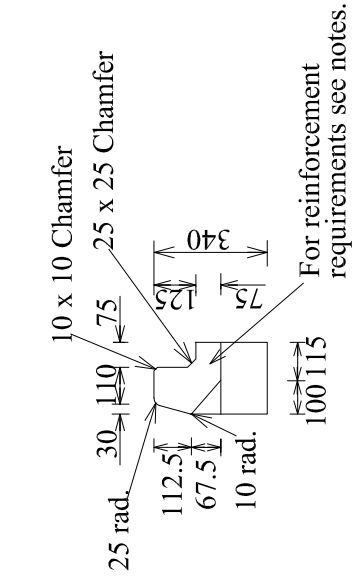


PLAN



SECTION E-E

SM KERB TYPE
LINTELS



SECTION H-H

B KERB TYPE
LINTELS

NOTES:

1. Standard Lintels are required to support a Test Load of 100kn in accordance with Vicroads Interim Test Method for Test Loading Pit Covers, Lintels and Lids.
2. Steel Reinforcement shall comply with section 611 of Vicroads specification
3. Concrete shall be Grade N40 or Higher complying with Vicroads Requirements.
4. Minimum Clear Cover to Reinforcement 50mm. for Precast Concrete Lintels.
5. Lintels are to be Charcoal colour

