

# Lynden Ward

December 2021



Lynden Ward Cr Lisa Hollingsworth is embracing the clean energy-powered electric vehicle evolution.

## Cr Lisa Hollingsworth

- 📞 9835 7844 or 0417 908 485
- ✉ [lisa.hollingsworth@boroondara.vic.gov.au](mailto:lisa.hollingsworth@boroondara.vic.gov.au)
- 📍 Private Bag 1 Camberwell VIC 3124

- 📘 LisaForLynden
- 🐦 LisaForLynden
- 📷 LisaForLynden





## Dear Resident,

Following a long, challenging winter and spring, it is wonderful to feel the warmth of summer upon us. It is with joy we see COVID-19 restrictions ease, and can reconnect with community and celebrate the freedoms we once took for granted.

As many businesses and individuals have had their financial independence compromised, the monetary and healthcare support from Federal and State Governments has been vital for business viability and family welfare, and has helped ease the pain of lost income. To our astute Treasurers and frontline workers, I say thank you.

I am pleased to advise Boroondara was among the first Melbourne municipalities to reach the double-dose vaccine threshold that has enabled our activity centres to reopen, and we can again frequent our retail precincts to support our traders and make bookings at our favourite restaurants, as we prepare for the Christmas festive season.

As we care for our community, we also care for our planet, and following a comprehensive consultation process Council has developed, and recently implemented, the Boroondara Climate Action Plan in recognition of the real and

increasing threat to our environment, to our health and wellbeing, and current and future generations' quality of life caused by our changing climate.

We all have a role to play as we work towards sustainability and resilience objectives to achieve carbon neutrality.

As we adapt to new and evolving technologies, there are many ways we can reach clean energy targets. In my case, I transitioned to an electric vehicle (EV), and can now charge my car conveniently from my garage. In preparation for the increase of EVs in Boroondara, our council officers are identifying priority sites to install EV charging stations to support residents and encourage visitors to our precincts. To learn more about climate change mitigation please visit [www.boroondara.vic.gov.au/CAP](http://www.boroondara.vic.gov.au/CAP)

I wish you and those dearest to your heart the best of good health and happiness.

Kindest regards,

**Cr Lisa Hollingsworth**



## Taking action on climate change

In late September, Council adopted our new Climate Action Plan (CAP) outlining how we plan to respond to climate change over the next 10 years. The declaration of a climate emergency was also passed by Council, in acknowledgement of our community's strong desire to take real action on climate change.

Council plans to be net carbon neutral by 2022, along with the aim for our broader Boroondara community to be net carbon neutral by 2035. By 2040, we hope as a Council and community to reduce our actual emissions by 100 per cent (compared with our corporate baseline year of 2007-08 and community baseline of 2020).

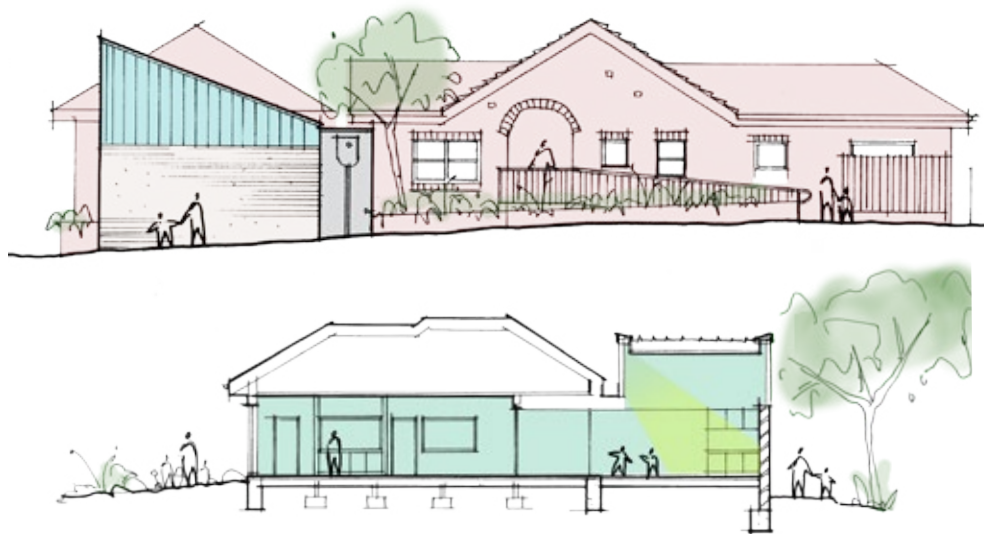
Within the CAP and the supporting implementation plan, there are hundreds of actions outlined that will be implemented by Council and the broader community in an effort to reduce emissions, improve our environmental performance, and ultimately reach our targets.

Implementing a community solar PV, battery and energy-efficiency bulk-buy program, halving the number of our buildings that use natural gas, and converting at least 90 per cent of our fleet cars to electric vehicles or other low-emission technology are just a small sample of what we intend to achieve.

To learn more about all the actions we are implementing, visit:

 [www.boroondara.vic.gov.au/CAP](http://www.boroondara.vic.gov.au/CAP)





## Early learning centre set for upgrades

Renewal works are scheduled to start at Through Road Early Learning Centre in the new year.

The project is part of Council's early childhood facility renewal program, which will see facilities upgraded to better meet the needs of children and staff now and in future.

The upgrade has been supported by the State Government, which has made a contribution of \$300,000, as part of its Building Blocks Early Learning Facility Upgrade grants program.

The refurbishment will provide an extension to one of the kindergarten rooms, a new kitchen, store and children's amenities.

Through Road Early Learning Centre's plans will also feature new bathrooms, separate

purpose-built learning spaces for three- and four-year-old kindergarten programs and a dedicated sleep area for babies.

Construction is scheduled to start in early-2022 and be completed by mid-year.

During construction, Through Road Early Learning Centre will relocate to temporary local accommodation.

We have worked closely with the centre committee and the Department of Education and Training to arrange a temporary location to ensure there is minimal impact to children engaging in their early education.

All programs, activities and services will continue as usual until construction works are completed.

## What not to put in your FOGO bin

Did you know that a whole truckload of organic material can end up in landfill if just one FOGO bin contains banned items? These are the three most common 'contamination' mistakes residents make:



### **Mistake #1 Using a plastic bag to collect food waste**

Please ensure you use only lime-green liners made from 100 per cent cornstarch and certified compostable (with AS4736 and AS5810 symbols). Visit our FOGO bin webpage (below) for more details.



### **Mistake #2 Binning food in containers, jars and cans**

Please remove all food from wrappings, jars, bottles or cans before placing it in your FOGO bin. Put clean containers in your recycling bin, and take soft plastics to REDcycle at Coles or Woolworths, or put in your waste bin.



### **Mistake #3 Binning pet poo and litter**

Compost pet poo at home using a pet poo composter (Council offers these for a subsidised price) or put in your waste bin only.

Spread the word and help us keep our FOGO material contamination free.

For further details on early works, visit:



[www.boroondara.vic.gov.au/projects-major-works](http://www.boroondara.vic.gov.au/projects-major-works)



9278 4444

For more information, visit:



[www.boroondara.vic.gov.au/FOGO-bin](http://www.boroondara.vic.gov.au/FOGO-bin)



Image: Supplied by UMS

## We are working to erase graffiti from our community

Graffiti continues to be an issue in our community – it is illegal, wastes time and precious resources to remove, and affects the charm and character of property and buildings. Many find it heartbreaking to see our neighbourhoods defaced with paint or markers.

Council has a detailed approach to graffiti management, including a quick response time to reported offences, education within schools, and providing assistance to private and commercial properties through free biodegradable graffiti removal kits and paint vouchers.

If you manage to remove graffiti quickly, it's less likely that it will recur. In the event that graffiti recurs on your property, Council highly recommends that you take a photo and submit it to the police, then remove it.

Thanks to the efforts of our Council officers and community, and the effect of lockdowns, we can report that year-on-year, the amount of reported graffiti in Boroondara has declined. A total of 21,015 square metres was removed in the year to June 2021, compared with 27,524 square metres in the previous 12 months.

Together, we can erase graffiti from our community. Council encourages you to report any offences you see through the following channels:

- **Council buildings and facilities:** Use the 'report an issue' eform on Council's website or call 9278 4444 during business hours.
- **Private property:** If your private residential or commercial property has been damaged by graffiti, report it to your local police station. Contact Council to request a graffiti removal kit or paint voucher.
- **Public property:** If graffiti is on public property, such as along railway lines or on traffic lights or poles, please report it to the responsible authority. A full list of contact details can be found on Council's website.
- **Snap Send Solve:** If you have a smartphone, you can use the Snap Send Solve app to immediately photograph and report any graffiti you spot in your neighbourhood. Find out more at: [snapendsolve.com](https://www.snapendsolve.com)