

Studley Ward

July 2021



Visit historic Willsmere as part of Open House
Melbourne on the weekend of July 24 and 25

Cr Nick Stavrou

📞 9835 7848 or 0482 999 209

✉ nick.stavrou@boroondara.vic.gov.au

📍 Private Bag 1 Camberwell VIC 3124



Dear neighbours,

Once again it was heart-warming to see so many of you attend the Anzac Day Dawn Service at the Kew RSL. As your ward councillor I laid a wreath on behalf of Council to remember and honour all those who made the ultimate sacrifice protecting what we hold sacred. Lest we forget.

This winter, Open House Melbourne (OHM) will feature some of our ward's great buildings including Willsmere, Villa Alba, and Kew Court House. This year's theme is *reconnect*, and I wholeheartedly support this sentiment from OHM: "Post-pandemic... it is clear that we must find new ways to reconnect and envisage transformative ways to live and work better together". I encourage you to visit these iconic buildings during the OHM weekend on 24 and 25 July.

Many of you may be fans of the Boroondara Eisteddfod, so you may be as delighted as I am to hear that the baby grand piano at Kew Court House, which hasn't been played for more than a year thanks to the pandemic, has been moved to the Hawthorn Arts

Centre, where it will be used during the Eisteddfod. Due to the pandemic the program has been moved online for 2021. Find all the details at **www.boroondara.vic.gov.au/eisteddfod**

Enhanced open spaces and preserving our heritage plays a major role in binding the present and the past. I had the privilege to hear from you at the Boroondara Conversations that these are high priorities for our community, so we are making a great effort to recommend adding significant buildings to the heritage lists. On the open space front, I am very excited to see the Victoria Park playground project ready for children to start having fun there soon.

As I write these words, we have just emerged out of lockdown following another COVID-19 cluster. I truly wish that you and your families are safe. Your council will be monitoring the situation closely and will continue to support our community.

Cr Nick Stavrou


Access new sauna with reciprocal rights


During consultation for the new Kew Recreation Centre (KRC), you told us how much you valued the sauna facilities on offer. So, in addition to a bigger and better sauna at KRC, Council has added one to the Hawthorn Aquatic and Leisure Centre too.

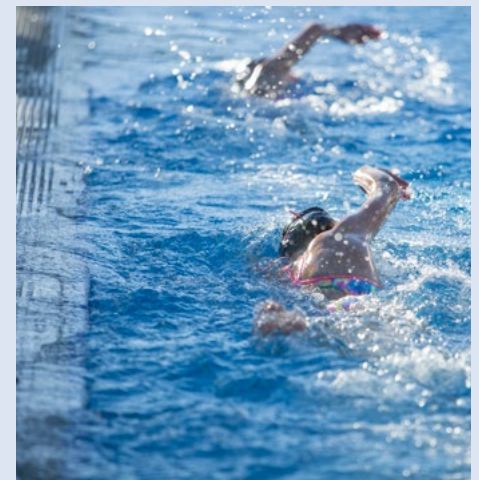
All Boroondara Leisure and Aquatic Facility members have reciprocal rights to take advantage of this new facility, which was completed in early June, just in time for winter months.

Located on the pool deck and accessed via the warm water pool hall, you'll be able to enjoy views of the outdoor pool area while you relax in the warmth.

To learn more about reciprocal rights and the facilities on offer across all our leisure centres, visit:

 **www.boroondaraleisure.com.au**

 **9278 4444**





Explore three iconic buildings

We are opening the doors to some of Boroondara's iconic buildings for Open House Melbourne (OHM).

Held across the weekend of 24 and 25 July, this is your chance to discover some of our most significant buildings including Studley Ward's Willsmere, Villa Alba Museum and Kew Court House.

Built in the 19th century, Willsmere was one of Australia's largest-ever asylums. Spread over 10 acres above Yarra Bend Park, the Italianate and French Second-Empire buildings were designed with the aim of portraying Melbourne as a civilised and benevolent city. In 1993, Willsmere was converted to private residences and, once a year during OHM, the public is invited to enter.


Villa Alba Museum is an 1880 Italianate mansion overlooking the Yarra River at Studley Park. It houses one of the most important examples of late 19th-century decoration in Australia. Now a museum, the mansion features rare hand-painted,

stencilled and gilded decoration by renowned Scottish-trained interior designers the Paterson brothers.

Since 1888, the Kew Court House has been a prominent fixture at Kew Junction, functioning as a courthouse and police station until the late 1990s. City of Boroondara purchased the site from the Victorian Government in 2007, and with the assistance of a community fundraising campaign and numerous grants, it was redeveloped into one of our premier art spaces in 2011. Now a hub for community arts and culture, the Kew Court House features an intimate theatre and is home to the Kew Historical Society, QArts and e.motion21.

For information on Open House Melbourne's Boroondara properties, including free activities, visit:

 www.boroondara.vic.gov.au/open-house-melbourne

 9278 4444

Victoria Park Regional Playground design

Following two rounds of community consultation, the final design of the Victoria Park Regional Playground has been completed.


Community feedback has helped inform the final design, which includes retaining the much-loved bluestone embankment wall, accessible items such as in-ground trampolines and a giant basket swing, sensory and active play elements including fitness stations, and a family-friendly learn to scoot/skate area. New park amenities including shade sails, improved picnic and barbecue facilities, and accessible car parking bays and pathways will complement the new playground.

Construction of the car-parking bays and minibus drop-off bays started in June, with the playground works scheduled to begin in late 2021.

The Victoria Park Regional Playground is supported by the Victorian Government through the Local Parks Program.

For more information:

 www.boroondara.vic.gov.au/victoria-park-playground

 9278 4444





Yarra Boulevard and Walmer Street Bridge improvements

The Department of Transport (DoT), formerly VicRoads, will start upgrade works in the coming months to improve the level of safety and security along Yarra Boulevard.

The works will include:

- new raised safety platforms at Wiltshire Drive, Bellbird Road, Molesworth Street, Yarravale Road, Boathouse Road and Walmer Street
- a new raised intersection at Yarra Street
- reconfiguring the Studley Park off-ramp intersection.

Improved street lighting, line marking and signage will be installed at each of the key intersections, and a physical median at some intersections to complement the raised safety platforms.

In addition to the CCTV camera overlooking the Eastern Freeway Bridge, a second CCTV camera will be installed near the Studley Park off-ramp to help Victoria Police monitor road safety and compliance with the road rules.

The designs have been approved and DoT officers are finalising the tender. The works are anticipated to commence in early September and to be completed by mid-2022.

If you have further questions about these works, contact DoT directly by emailing **MSE_mail@roads.vic.gov.au**

Meanwhile, work to replace the Walmer Street northern land bridge with a disability-compliant wider bridge continues, with the goal to better meet the current and future needs of our community.


Kew Recreation Centre build on track


Construction of the Kew Recreation Centre is underway and on track to be completed by mid-2023. Most of the bulk excavation works have been completed and piling works have started.

Over the coming months the community will start to see the concrete foundations for the new building. The appointed builder, ADCO Constructions, has a detailed traffic management plan to support the concrete truck movements required to and from the site during this time. Careful consideration has been given to mitigate impact on surrounding residents where possible.

The concept design for the new aqua play area was also recently shared with the community for final feedback. Once finalised, an updated virtual tour of the completed design will be shared on the project page.

To stay up to date with the latest information, visit:

 **www.boroondara.vic.gov.au/kewrec**

 **9278 4444**

