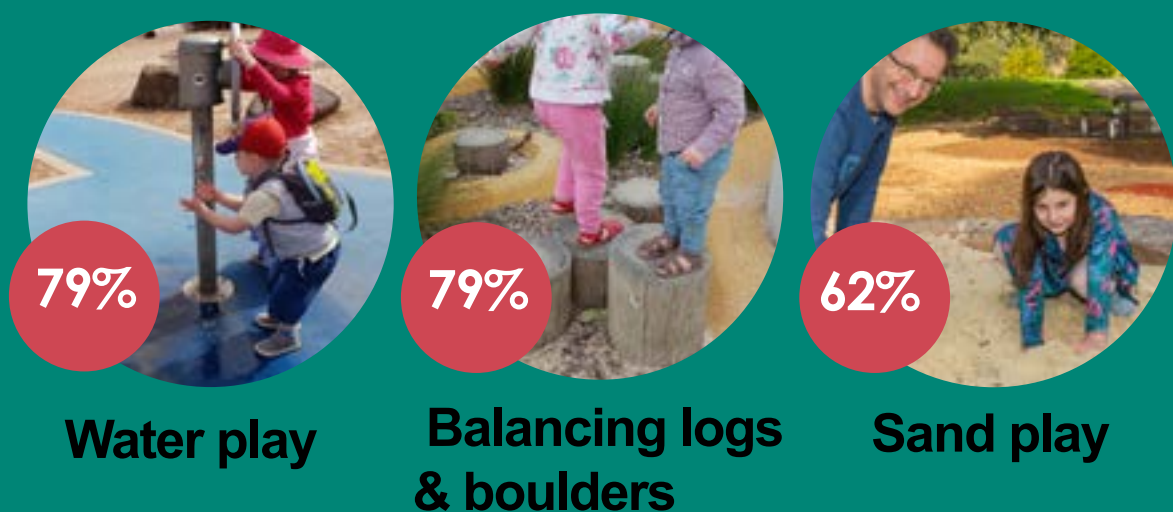


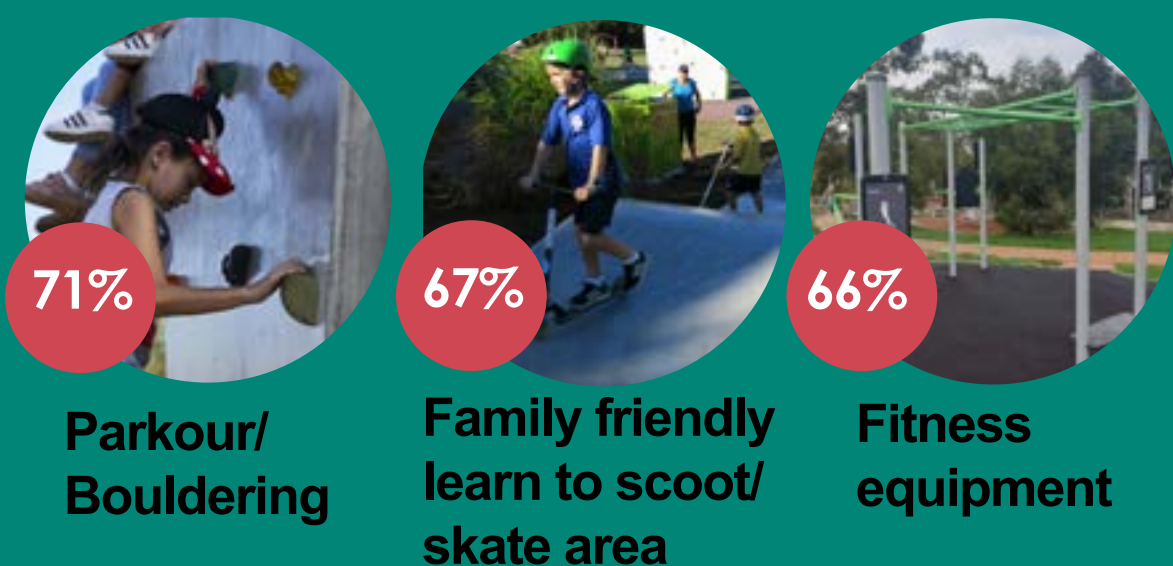
Play equipment



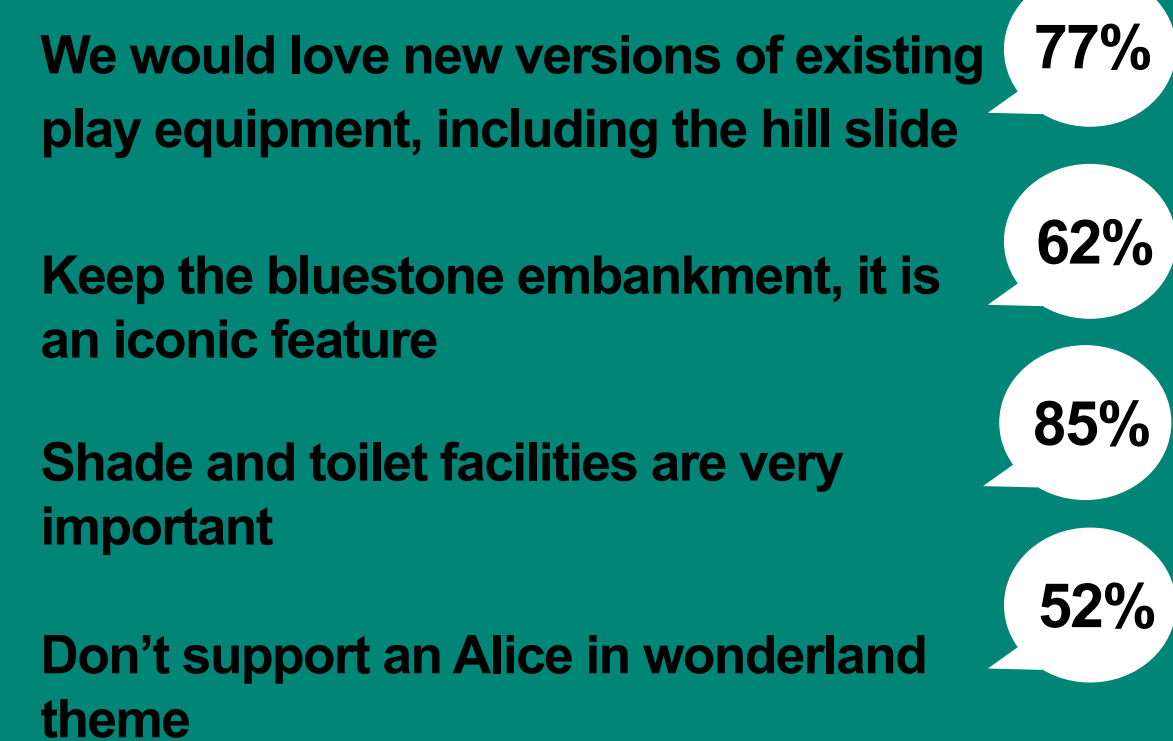
Sensory play opportunities



Active play opportunities



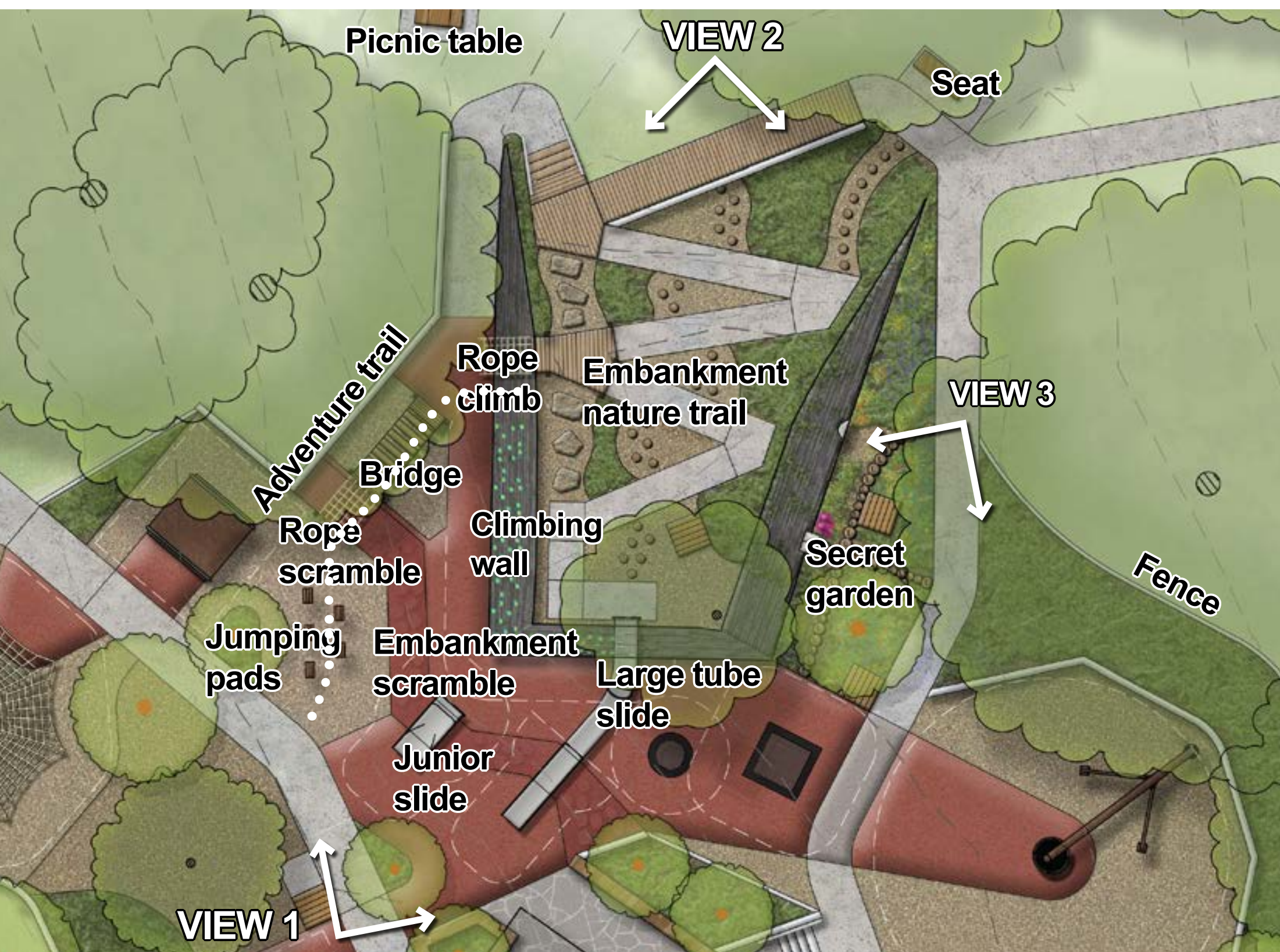
Other important community feedback



NOTE: Implementation of proposed works will be subject to community feedback, further detailed design, funding availability and authority approval.

Further information contact Landscape and Design
Phone: 9278 4060
Email: environment@boroondara.vic.gov.au
www.boroondara.vic.gov.au/improving-playgrounds

1. Revitalised Bluestone Embankment



During stage one of community consultation the bluestone embankment was identified for retention by the community.

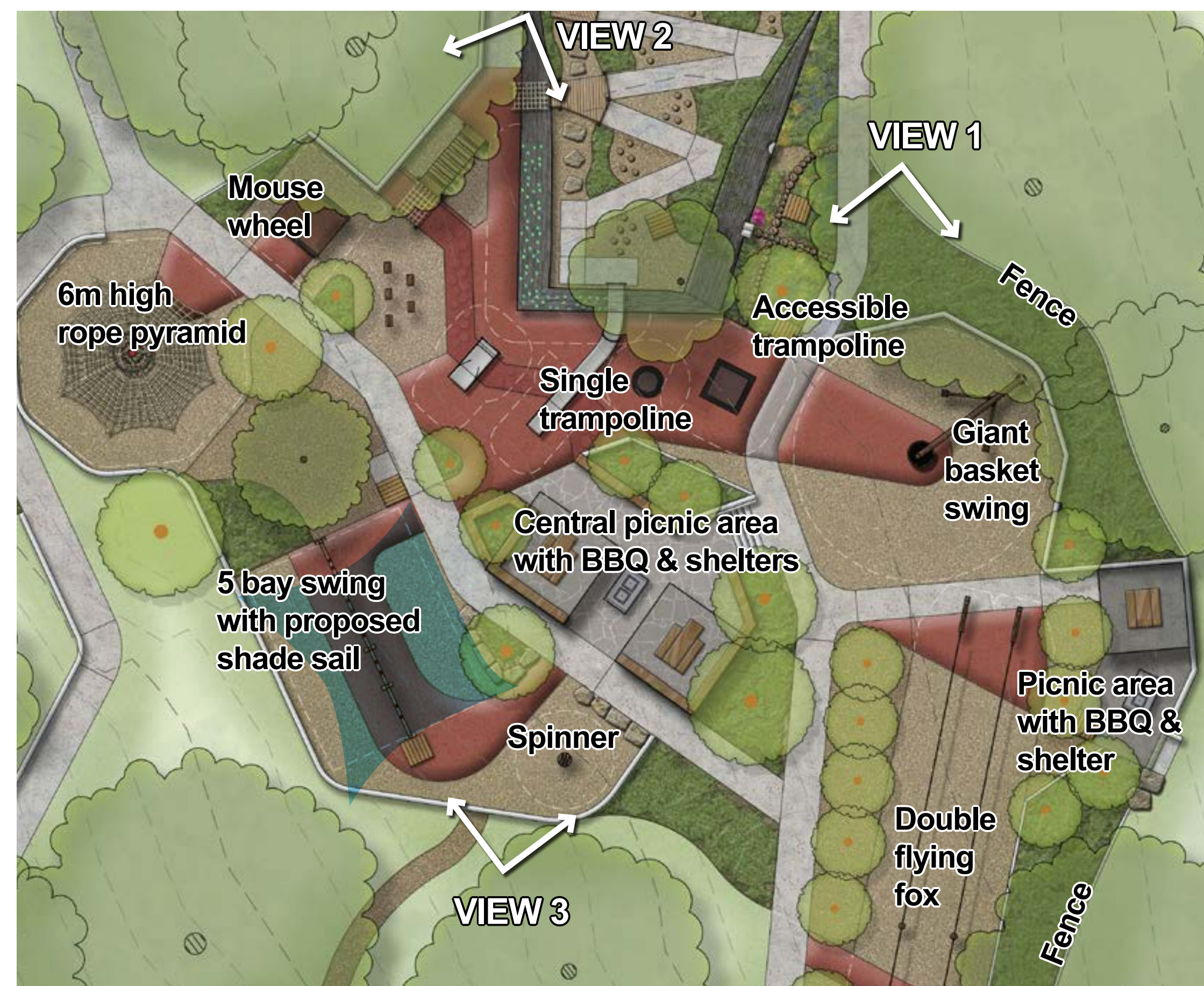
"The delightful challenge has been to find a way to activate it for play whilst at the same time not substantially modifying it and keeping views to and from it open and inviting. It's formidable presence now offers significantly more play opportunities as well as access for all to the summit." Ric McConaghy, playground designer.

Key Features

- New 3.6m high tube slide, facing south away from the summer sun
- Climbing grips attached to bluestone wall, designed for varying abilities
- Adventure trail connection to the top of the bluestone embankment, including a rubber embankment scramble, jumping pads, rope scramble, bridge and rope climb
- Accessible junior slide
- Embankment nature trail with log steppers, parkour platforms, sensory planting and accessible grade path to the top of the embankment so everyone can enjoy the view
- New transparent protective fencing at top of bluestone wall
- Seating opportunities to enable supervision from all perspectives
- A 'Secret Garden' area at the base of the embankment offers a small nod to the former Alice and Wonderland theme. Log and stone steppers through garden beds lead to secret doorways and flamingo croquet sculptures



2. Central Play Area



The first stage of consultation identified the types of play equipment that were most important to the community. The design has included the top 6 requests plus many more.

"The design intends to offer a range of play opportunities that allow the development of skills and aspirations over time. There will be simple climbing and more complex climbing, small and accessible slides, complimented by larger more challenging journeys, singular spinning and radical rotating. Likewise the opportunity for discovery and exploration will seem initially focussed inward whilst giving inspiration to seek further afield."
 Ric McConaghy, playground designer.

Key Features

- Double flying fox with one accessible harness seat and one pommel seat
- Giant basket swing, suitable for all ages groups and up to five users at one time
- Two in ground trampolines, one wheel chair accessible collocated with single trampoline
- Five bay swing frame, including an expression seat (combined infant and adult seat), infant seat, adult harness seat and two sling seats, with a proposed shade sail above
- 6m high challenging rope pyramid climb
- Spinner / carousel
- 'Mouse wheel' unique and challenging piece of equipment for older children and adults

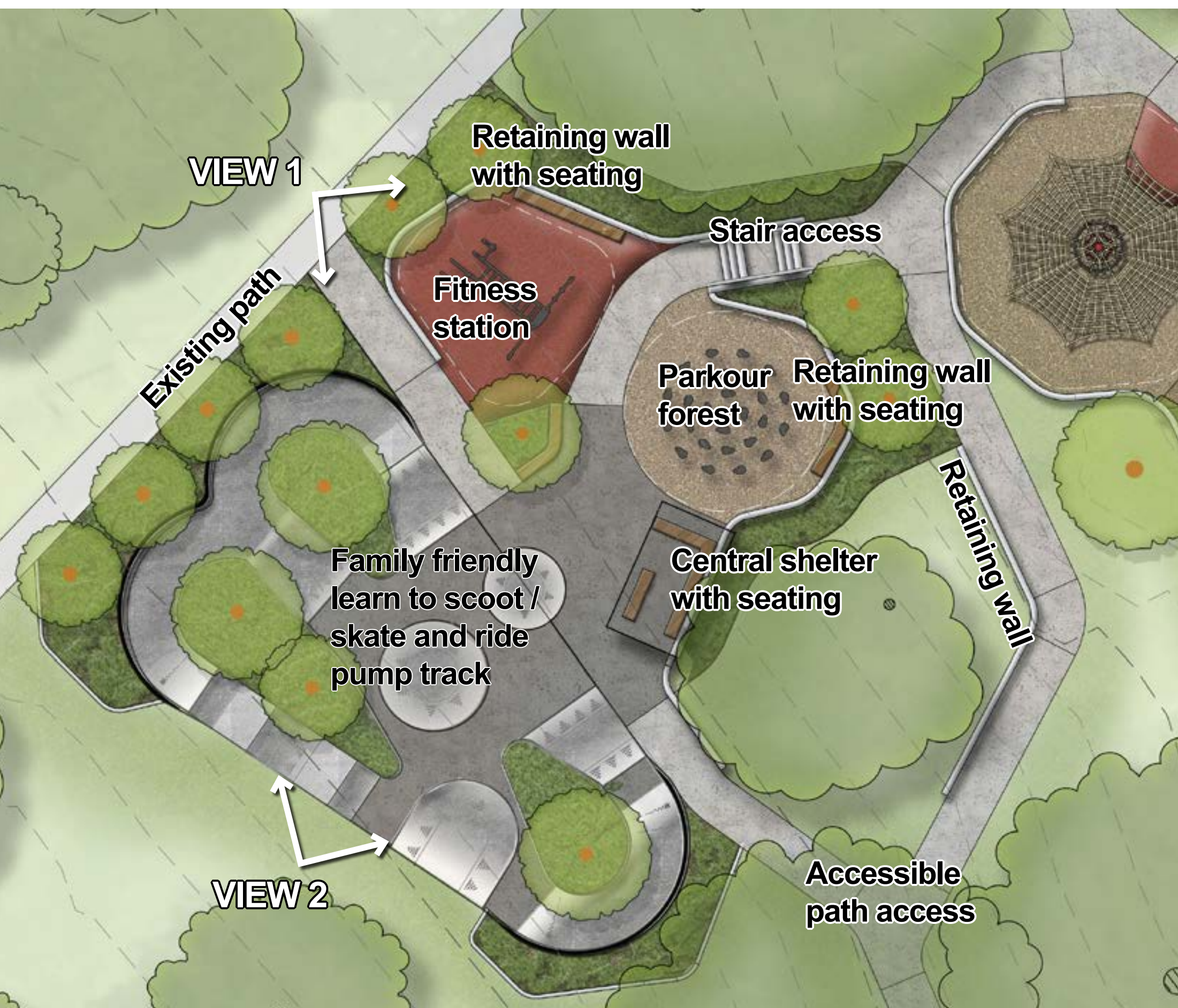


Victoria Park Regional Playground, Kew

Draft Concept Design June 2020

Further information contact Landscape and Design
 Phone: 9278 4060
 Email: environment@boroondara.vic.gov.au
www.boroondara.vic.gov.au/improving-playgrounds

3. Active Play Area

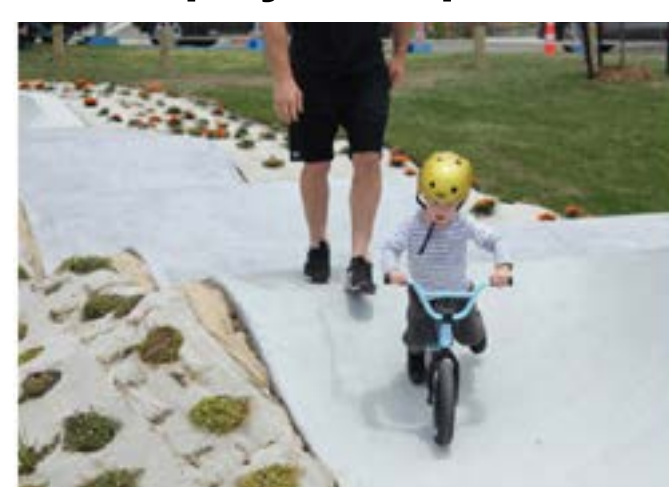


During the first stage of consultation the community identified active play as an important component they would like to see in the new regional playground. The design incorporates the top three most popular items.

Key Features

- Family friendly learn to scoot, skate and ride pump track
- Parkour forest, unique parkour obstacle suitable for a range of ages and abilities, pick your own path to traverse across the posts horizontally or vertically
- Fitness station with pull up bar, gorilla bars, leg raises, body dips and roman rings
- A dedicated seniors fitness area is also proposed just to the north of the playground. These works are subject to an external grant application.

Active play examples



Pump track



Parkour forest



Fitness equipment



4. Sensory Play Area



During the first stage of consultation the community identified sensory play as an important component they would like to see in the new regional playground. The design offers numerous sensory, imagination-lead and nature play experiences.

Key Features

- Water play - water pump with creek channel
- Sand play - sand pit with inclusive play edge
- Natural play - balancing logs and rock steppers
- Build your own cubby spaces, one accessible 'lean-to' style and one dome frame under existing tree
- 'Yarning circle' with boulder seating and timber sculptures for restful play
- New sensory garden bed planting and shade tree

"Victoria Park offers open and extended views through a delightful, and in places eclectic, green space. it is intended to maintain that sense that one can see for miles, but that the eye may alight on an unexpected destination offering a range of engagements. Planting and infrastructure improvements have been carefully selected for their transparency so that views remain as unobscured as is possible. The existing planting will be complemented in a sensitive way affording more delightful shady spots, habitat for wildlife and an ever-evolving chiaroscuro throughout the daylight hours. This also allows a degree of off site supervision of the space whilst passing, bearing in mind that the space will now likely have more people in it more often thus making it safer for all anyway by way of increased activity."

Ric McConaghy, playground designer.



Sensory play examples



Build your own cubby frame



Sensory planting



Yarning circle with sculptures



Sand pit with inclusive edge



Water pump and creek channel



Timber play sculptures



Balancing logs & rock steppers

Victoria Park Regional Playground, Kew

Draft Concept Design June 2020

Further information contact Landscape and Design

Phone: 9278 4060

Email: environment@boroondara.vic.gov.au

www.boroondara.vic.gov.au/improving-playgrounds

5. Entry Precinct



“Victoria Park is an extraordinary green space offering opportunity for informal recreation, time in nature, formal and informal sport, gathering and simply being. It is intended to complement this existing provision by introducing further opportunity for play and participation for all. The generally sloping nature of the park offers extended views across the site whilst affording some challenge to creating access for all. It is intended to work as best as possible with the contours so that transition between spaces is achieved across the grade.” Ric McConaghy, playground designer

The entry precinct was strategically located to enable all ability access to the playground with minimal disruption to site topography, thereby protecting the significant site trees.

Key Features

- Distinct entry plaza and arbor gateway to the playground
- New accessible car parking bays and accessible path network to and throughout the playground, enabling ‘play for all’
- New rest room with one accessible cubicle and one ‘[Changing Places](#)’ cubicle to further improve inclusive use of the playground and park. The rest room location was selected for optimal passive surveillance while still maintaining a sympathetic buffer from existing residential properties
- Bike rails, bike repair station, dog parking
- Landscape materials to complement the existing landscape character



Playground entrance, furniture and material examples



Example timber arbor



Feature wall



Standard retaining wall



Seating wall



Feature paving



Example rest room building



Playground shelter



Active play area shelter



Picnic setting



Bike repair station & bike rails



Indicative planting



Existing trees to be retained and protected