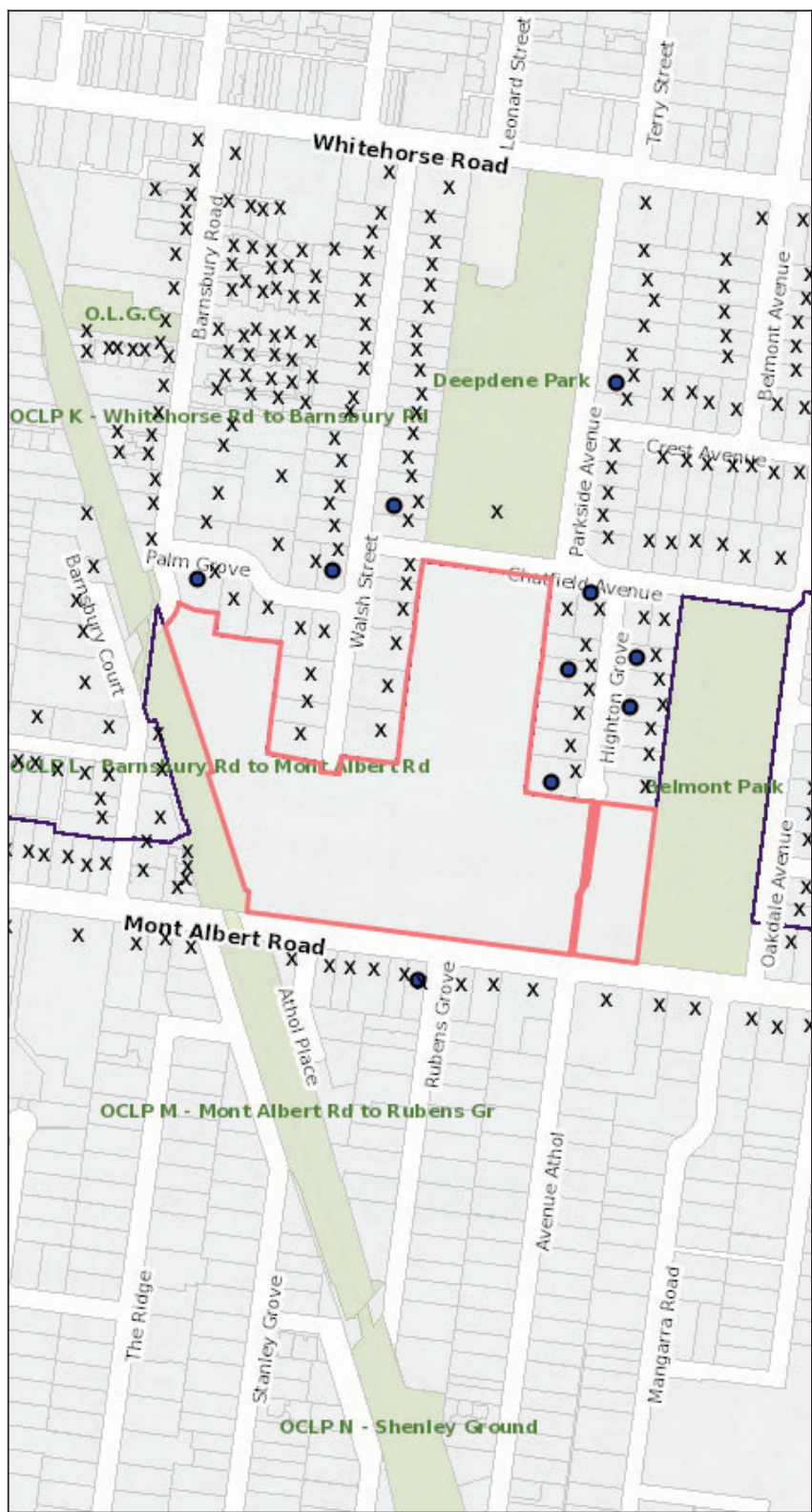
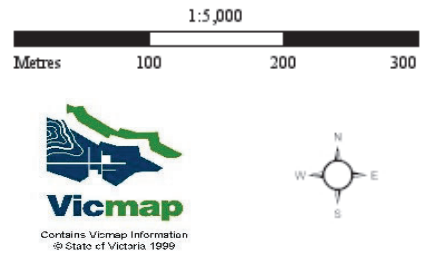


Location of Subject Site, Notified Properties & Objectors



- 43-65 Mont Albert Road
CANTERBURY
- Proposed Application
 - × Properties Notified
 - Objectors
- Suburbs
- Property
- Railway Stations
- Railway Line
- Recreation Areas



Contains Vicmap information. The State of Victoria, Department of Sustainability and Environment, 2006. This material may be of assistance to you but the State of Victoria and its employees do not guarantee that the publication is without flaw of any kind or is wholly appropriate for your particular purposes and therefore disclaims all liability for any error, loss or consequences which may arise from your relying on any information contained in this material [or publication]

The City of Boroondara does not warrant the accuracy or completeness of the information in this document, and does not accept responsibility for any losses or damages (whether direct or consequential) suffered by you or any other person, arising from your use of or reliance on this information. You must not reproduce or communicate this document without the prior permission of the City of Boroondara.
Map produced: 5 June 2019, 10:42:55