

Hilda Street Reserve Playground Replacement

After receiving feedback from the community the design of the new playground is now complete.

The design includes the community's most popular themes. The new playground offers new play opportunity for a range of ages, increased connection and accessibility between park elements and a balance of traditional physical play and nature based play opportunities.

Construction is programmed to commence in late 2021.

Key themes we heard during community consultation:

We would love an equipment upgrade

A rope bridge sounds fun!

We love swings

Please include monkey bars



2



3



4



5

6

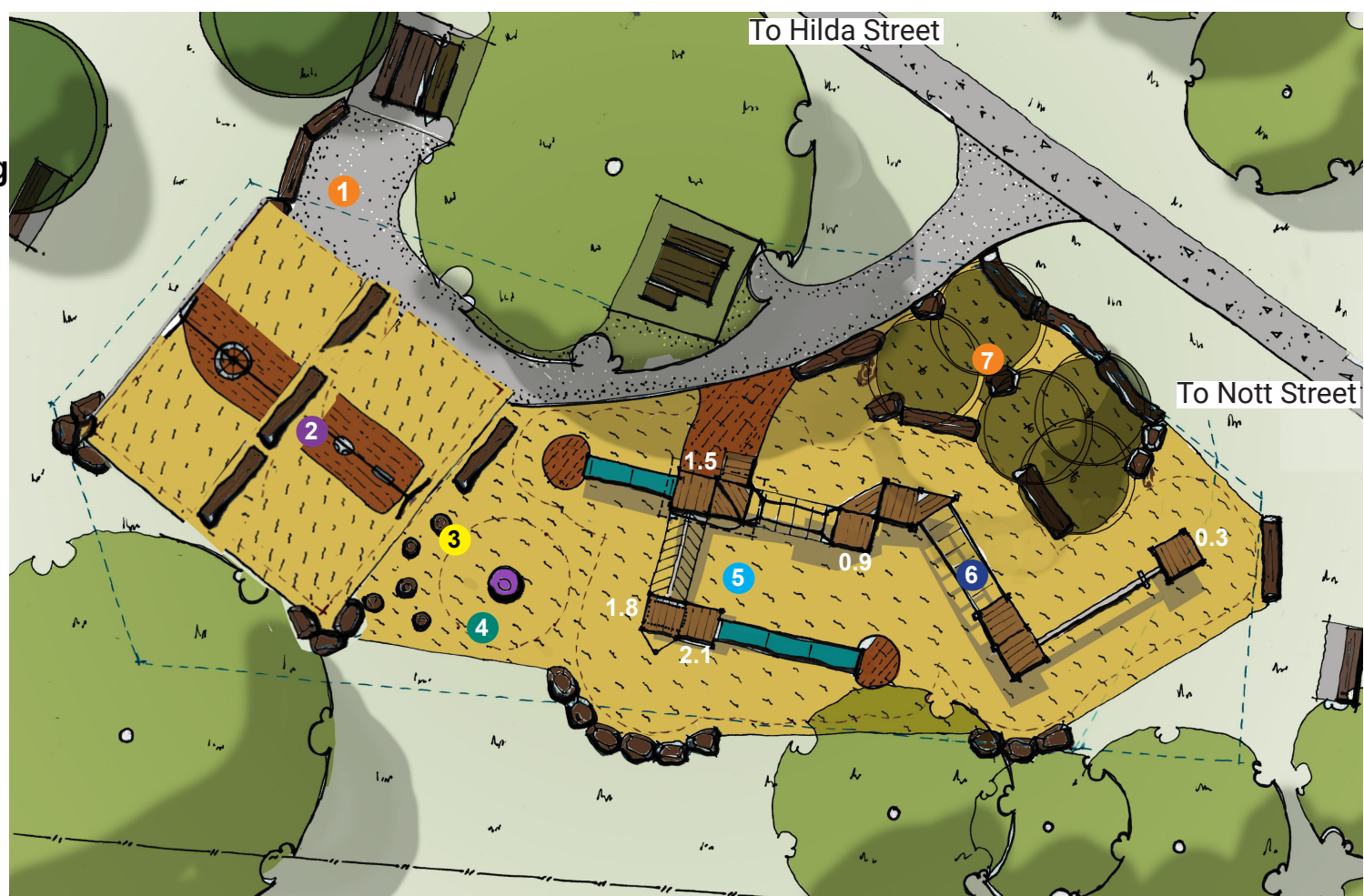


7

INCLUSIONS

- 1 Improved accessibility
- 2 Swing frame with toddler seat, sling seat and basket swing
- 3 Balancing logs
- 4 Bucket spinner
- 5 Combination Unit including: rope tunnel, balance bridge, fire pole, junior and senior slide
- 6 Monkey bars and track glide
- 7 She Oak grove

- Permeable concrete pavement
- Rubber soft fall
- Boulders
- New shade trees
- Existing footprint
- Playground mulch
- Existing trees



Note: All equipment and surface treatments shown subject to final budget review and site conditions and subject to change

For more information contact Council's Landscape and Design Team on **9278 4444** or visit www.boroondara.vic.gov.au/hilda-street-reserve-playground