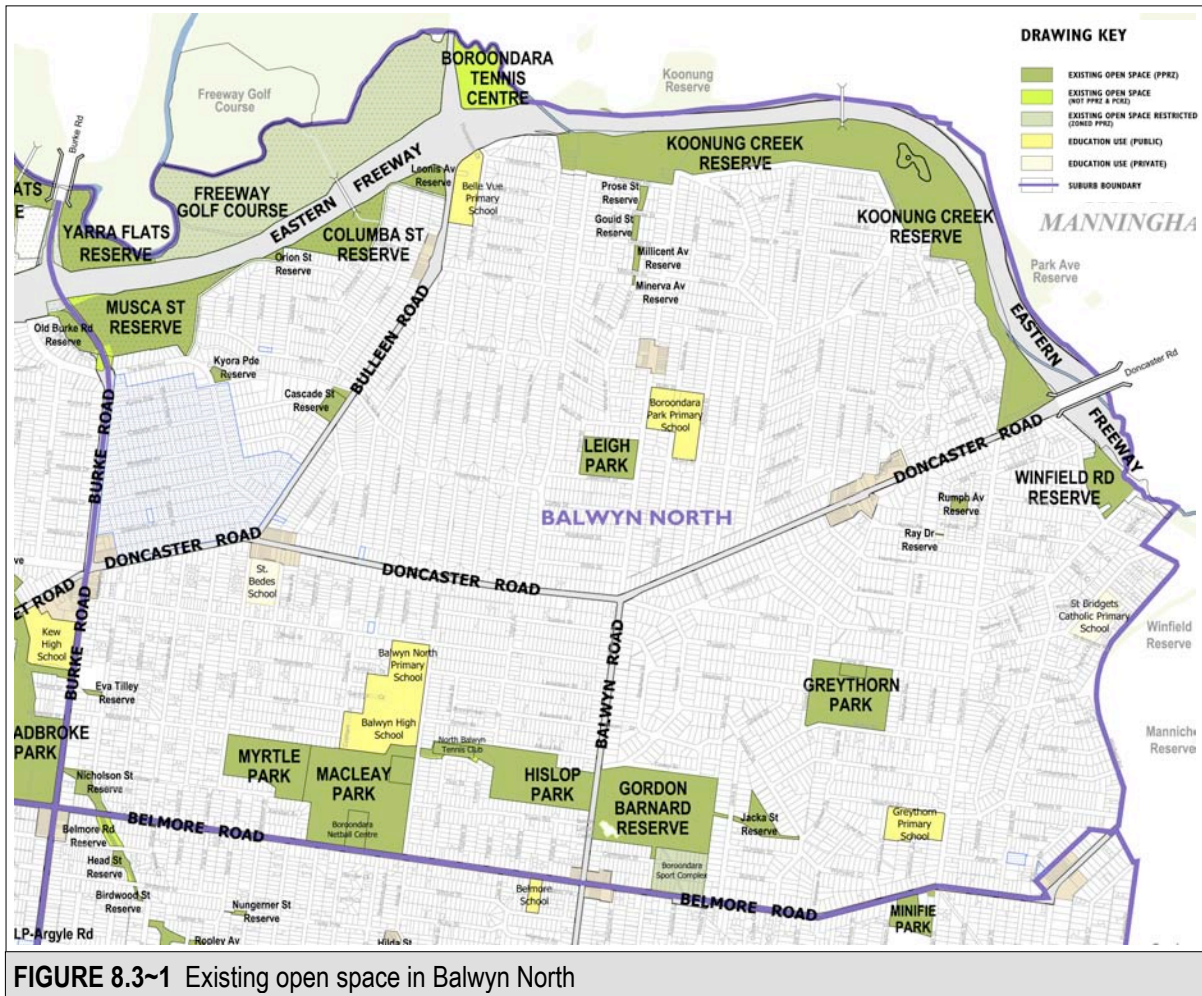


## 8.3 Balwyn North



### 8.3.1 Existing conditions



#### 8.3.1a Overall precinct description

##### Extent of the precinct

The Yarra River and Koonung Creek define the northern boundary of Balwyn North, with Burke Road defining the west and Belmore Road the south. The east is defined by a combination of Sweyn Street and Winfield Road.

##### Summary of open space along the waterways

Koonung Creek defines the northern boundary, and although this creek has been highly modified and is contained in an underground pipe for much of its length through Boroondara, the linked open space system provides a valuable recreational and overstorey habitat corridor. Koonung Creek Reserve, Winfield Road Reserve, Boroondara Tennis Centre and Freeway Golf Course are all open

spaces located along the creek corridor. The Koonung Creek Trail connects Winfield Road Reserve and Koonung Creek Reserve, and combined, these open spaces provide a range of informal activities and environmental features including extensive wetlands with boardwalk system, revegetation with native and indigenous vegetation and other facilities including seating, playgrounds, and a range of walking paths additional to the shared trail.

The Koonung Creek flows above ground past the Boroondara Tennis Centre and Freeway Golf Course where it flows into the Yarra River. The Koonung Creek Trail does not continue along the creek alignment, but is located south of the freeway including Columba Street and Musca Street Reserves. This trail connects under the freeway and into Yarra Flats Reserve and the Main Yarra Trail.

There is only a short section of the Yarra River in Boroondara, with the Freeway Golf Course and Yarra Flats Reserve adjoining the river before it flows downstream through Kew East.

### **Existing open space**

The major sporting reserves in Balwyn North include Gordon Barnard Reserve, Hislop Park, Macleay Park and Myrtle Park. Macleay Park is the most popular of these and they all provide some informal recreational facilities and access along with a range of organised sporting uses. Greythorn Park includes sporting facilities, an environmental character with some remnant woodland and a small wetland area that contributes to its diversity of character. Other smaller open spaces include a series of reserves that connect down a former drainage easement to the Koonung Creek Reserve, along with some other reserves distributed through the precinct.

### **Ancillary open space**

There are four public schools in Balwyn North. Balwyn High School is located near Macleay Park and contributes to the open space character. Boroondara Park Primary School is located near Leigh Park, again contributing to the open space character, particularly with the presence of overstorey trees. Belle Vue Primary School has a sports field and is located near the freeway and existing open space. Greythorn Primary School has open grassed external areas and trees to the perimeter, which contribute to the open space character of the precinct.

## **8.3.1b Quantity of open space in Balwyn North**

Following is a brief summary of the key statistics for quantity of open space in Balwyn North:

- 103.02 hectares of open space
- 11.4 per cent of the total suburb area is open space
- 17.2 per cent of the total open space in Boroondara
- 49 sqm of open space per person, based on the estimated population for 2011
- other large adjoining open space includes Yarra Flats Reserve, Hays Paddock and Stradbroke Park in Kew East and Bulleen Park in the adjoining City of Manningham to the north.

**Table 8.3(i) Number, size and type of open space in Balwyn North**

No	Hierarchy of open space	Area (ha)
8	Regional	56.90
6	Municipal	42.60
1	Neighbourhood	1.04
2	Local	1.57
6	Small Local	1.11
2	Small Local Link	0.03
<b>25</b>	<b>Totals</b>	<b>103.25</b>
2	<i>Restricted</i>	29.39
27	<i>Total including restricted</i>	132.64

### 8.3.1c Open space hierarchy and character in Balwyn North

**Table 8.3(ii) List of existing open space type and character classification**

Open space	Area sqm	Hierarchy	Primary Character Classification	Secondary Character Classification
Boroondara Tennis Centre	38,065	Regional	Restricted sport & recreation	Waterway
Cascade Street Reserve	7,261	Local	Informal	
Columba Street Reserve	36,254	Regional	Linear	Informal
Eva Tilley Reserve	912	Small Local	Linking space	
Gordon Barnard Reserve	106,751	Municipal	Sporting	Play
Gould Street Reserve	1,777	Small Local	Linear	Informal
Greythorn Park	59,410	Municipal	Sporting	Informal, Wetland/water feature Seating/viewing
Hislop Park	68,305	Municipal	Sporting	
Jacka Street Reserve	10,413	Neighbourhood	Informal	Linking space
Koonung Creek Reserve	313,352	Regional	Linear	Wetland/water feature, Informal
Kyora Parade Reserve	2,387	Small Local	Informal	Water feature (WSUD)
Leigh Park	25,295	Municipal	Sporting	Informal
Leonis Avenue Reserve	9,795	Regional	Linear	Informal
Macleay Park	120,216	Municipal	Sporting	
Millicent Avenue Reserve	1,777	Small Local	Linear	Informal

**Table 8.3(ii) List of existing open space type and character classification in Balwyn North**

Open space	Area sqm	Hierarchy	Primary Character Classification	Secondary Character Classification
Minerva Avenue Reserve	241	Small Local Link	Linear	Informal
Musca Street Reserve	86,681	Regional	Linear	Informal
Myrtle Park	45,964	Municipal	Sporting	Service easement
Nicholson Street Reserve	8,471	Local	Linear	Informal
Orion Street Reserve	1,533	Regional	Linear	Informal
Prose Street Reserve	1,831	Small Local	Linear	Informal
Ray Drive Reserve	107	Small Local Link	Linking space	
Rumpf Avenue Reserve	2,451	Small Local	Informal	
Winfield Road Reserve	44,551	Regional	Waterway	Informal
Yarra Flats Reserve (East)	38,684	Regional	Waterway	Linear, Wetland/Water feature, Nature

### Heritage values of open space

There are no recorded heritage values for open space in Balwyn North.

### Master Plans

Council has two Concept Master Plans for open space in Balwyn North:

- Greythorn Park Master Plan (1997).
- Gordon Barnard Reserve Master Plan (2001).

#### Greythorn Park Master Plan

This Master Plan has more than 70 per cent of the actions complete, with some remaining to be implemented subject to funding availability. The actions have improved both the recreational and environmental values of the reserve.

#### Gordon Barnard Reserve Master Plan

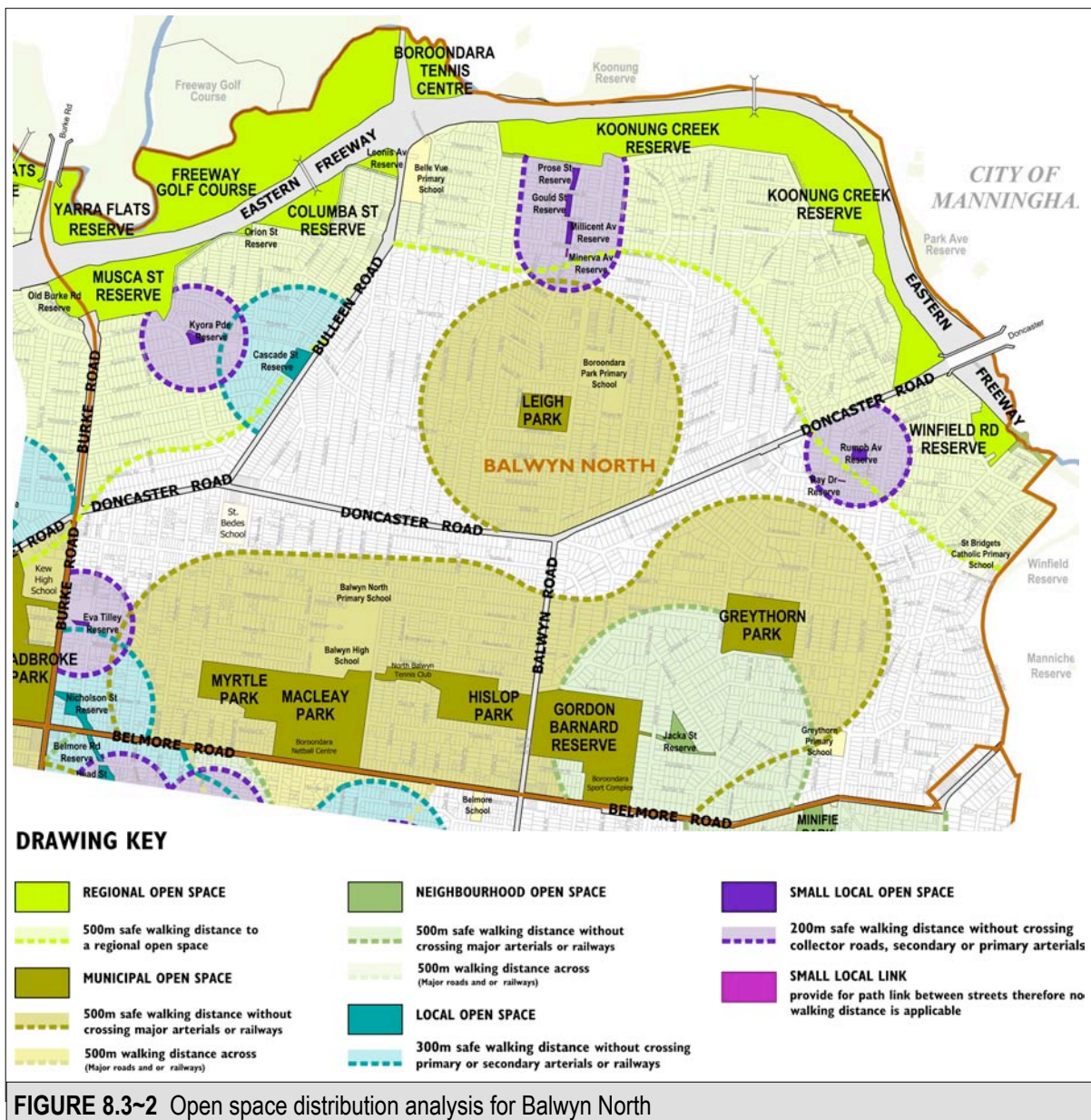
This was prepared in 2001 and a range of actions has already been completed, with some remaining to be implemented and others that are no longer relevant.

### 8.3.1d Distribution of open space in Balwyn North

The majority of open space is located along the waterways including Koonung Creek and the Yarra River. The Eastern Freeway does form a barrier to safe and easy access to open space located on the north side of the freeway. The majority of the open space north of the freeway is the Freeway Golf Course and Boroondara Tennis Centre, both of which are restricted areas of open space available on a fee paying basis only. Yarra Flats Reserve is the only open space on the north side of that freeway that does not have restricted use, and this can be accessed via an existing underpass under the Freeway from Musca Street Reserve.

The freeway does impact on the natural peaceful qualities of open space for residents in the northern area of this precinct. While not a physical barrier to open space, the freeway does limit the potential benefits open space has on people's mental health and wellbeing. It is assumed therefore that people in this area will also seek open space that is not subject to traffic noise for at least some of the time. Currently the nearest open space that offers this is Leigh Park. North of Doncaster Road Leigh Park is the only major open space outside of the catchment of the Koonung Creek Reserve. This results in some residential areas to both the east and west of Leigh Park being further than 500 metres walking distance of open space.

The major roads that present barriers to safe access to open space are Balwyn Road, Doncaster Road and Bulleen Road. South of Doncaster Road the system of Municipal open spaces including Macleay Park, Gordon Barnard, Hislop and Myrtle Parks provides good access for residents to open space, however there are some gap areas and these are described Section 8.3.4 and Table 8.3(iii).



## 8.3.2 Community characteristics for Balwyn North

### 8.3.2a Demographic summary of existing forecast trends

Source: ABS Census data, 2006 (.id Consulting profiles, 20/1/11)

#### Age structure:

Compared with the Municipal-wide average, there is a larger proportion of younger age groups between 0 to 17 years and a larger proportion of older age groups of over 60 years.

Forecast trends through to 2026 include:

- an overall slight increase in age groups younger than 60 years
- an increase in the 60+ age group.

#### Household type:

Compared with the Municipal-wide average, there is a larger proportion of couple families with children and a similar proportion of single-parent families.

Forecast trends through to 2026 include:

- an increase in couples without dependents
- a slight increase in couple families with dependents
- a slight increase in lone person households.

#### Dwelling type:

Compared with the Municipal-wide average, there is a larger proportion of separate houses and a lower proportion of semi-detached row terrace/townhouse and apartment/flats. Forecast information is not available for dwelling types.

**Total population (2011):** 21,004

**Forecast population in 2026:** 22,908 (increase of 1,904)

Source: .id Consulting incorporating VIF figures

### 8.3.2b Summary of household survey outcomes for Balwyn North

A total of 285 household surveys were received from residents in Balwyn North, which represents 15.6 per cent of the total surveys received. This is slightly higher than the proportion of Balwyn North residents in the Boroondara population which is 12.8 per cent.

#### Most frequently visited open space reserves:

USE	OPEN SPACE	REASONS TO VISIT	SUGGESTED IMPROVEMENTS
<b>Open space within walking distance</b>			
38%	Koonung Creek Reserve	walking (38%) exercising (33%) dog walking (23%) cycling (17%)	Additional rubbish bins and seats. Install noise barrier from freeway noise.
20%	Macleay Park	walking (39%) dog walking (17%) exercising (10%)	Ensure sufficient space for informal use, additional seats, drinking fountains and native trees.

USE	OPEN SPACE	REASONS TO VISIT	SUGGESTED IMPROVEMENTS
19%	Greythorn Park	walking (28%) dog walking (21%) playing with children (21%) watching sport (21%)	Upgrade clubrooms and sporting facilities, enforce dog on-lead areas, additional dog off lead areas.
14%	Gordon Barnard Reserve	walking (45%) dog walking (17.5%) watching sport (17.5%) exercising (15%)	Additional rubbish bins, seats, trees and pedestrian crossing access to the park.
11%	Leigh park	exercising (26%) playground (26%) walking (19%)	Additional seats, toilets, provide play equipment for a range of age groups.
Open space beyond walking distance			
19%	Hays Paddock	playground (44%) dog walking (13%) playing with children (13%)	Additional trees, car parking, lighting.
12%	Maranoa Gardens	native vegetation (38%) ambience, beauty (24%) peaceful (21%)	Enforce dog on lead areas, regular maintenance required, additional seats.
10%	Koonung Creek Reserve	walking (38%) dog walking (28%) cycling (24%)	Cyclists conflict with pedestrians on shared path, additional drinking fountains.
7%	Yarra Trail	cycling (50%) walking (30%) ambience, beauty (10%)	Additional rubbish bins, upgrade toilets.

**Types of open space used (top four):**

85% local streets for exercise  
68% small local parks  
65% large parks and gardens  
63% open space along Koonung Creek.

**Values (top four):**

71% trees  
69% place to relax and unwind  
62% health and wellbeing  
56% accessible.

**Activities and facilities in open space (top four):**

92% walking paths  
77% seats  
76% open grassed areas  
48% drinking fountains.

### **Provision and maintenance of facilities:**

Respondents identified they are generally satisfied with the provision of facilities, but with some level of dissatisfaction with the provision of seats, toilets, picnic tables, shelters and drinking fountains. In relation to maintenance, there is a good level of satisfaction with most facilities.

### **General comments:**

- Highly value open space, retain what is there and some requests for more.
- Support additional indigenous planting and street trees to preserve ambience and provide shade.
- Generally parks are well maintained.

For further details on household survey outcomes refer to Appendix B of the Strategy.

## **8.3.2c Implications of community characteristics for future open space planning**

The forecast population change is likely to result in an increase in numbers of older people and lone person households, along with a slight increase in family households and age ranges under 60 years. Therefore future open space planning will need to increase the diversity of facilities for older adults, including those that encourage them out into open space to maintain physical and social wellbeing. Proposed new open space will be designed to provide a diverse range of opportunities for all age groups.

## **8.3.3 Land use trends in Balwyn North**

### **8.3.3a Overview**

The forecast residential population increase in Balwyn North represents nine per cent of the total population with a forecast growth of approximately 1,900 people across the suburb changing from 21,004 in 2011 to 22,908 in 2026. Just under 50 per cent of the forecast population is likely to live in the activity centres, while just over 50 per cent will be distributed through the remainder of the suburb.

There are a total of eight activity centres located either wholly or partially within Balwyn North. These are shown on Figure 8.3~3 with solid red lines defining the extent of the core of the activity centre.

Figure 8.3~3 also shows the extent of existing Heritage Overlays within Balwyn North. While redevelopment is likely to occur within these areas, it is anticipated they will receive a lower intensity of redevelopment due to the presence of built form that is of heritage significance. Other controls that are likely to influence the type and extent of forecast redevelopment are the Significant Landscape Overlay and the Environmental Significance Overlay, and the extent of these are also shown on the land use trends diagram in Figure 8.3~3.

The activity centres located in Balwyn North are described after **Figure 8.3~3**.

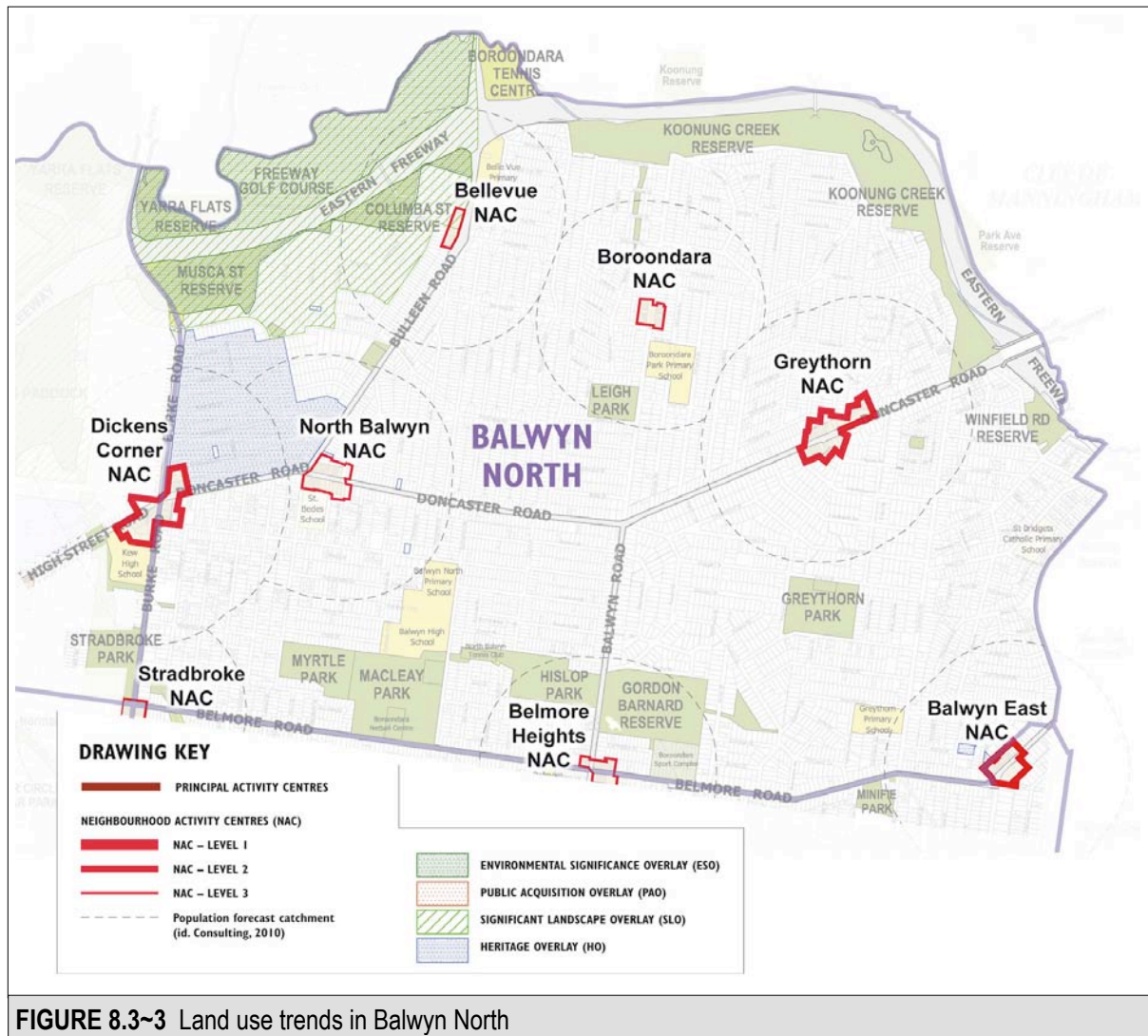


FIGURE 8.3~3 Land use trends in Balwyn North

### 8.3.3b Level 2 Neighbourhood Activity Centres (NAC) in Balwyn North

#### Dickens Corner NAC

This Activity Centre is located at a five way intersection, with the part east of Burke Road located in Balwyn North and the part west of Burke Road located in Kew East. The large stand-alone supermarket site located on the north side of Doncaster Road is identified in the *Activity Centre Strategy* as a strategic site for redevelopment to accommodate higher densities. The forecast population increase of just over 100 people within the Centre will place additional demand on open space to the north of Doncaster Road.

#### Greythorn NAC

This Activity Centre is located wholly within Balwyn North and on both sides of Doncaster Road. The *Activity Centre Strategy* identifies that the centre will provide local convenience goods and services to the local community and become a hub of mixed use including introduction of higher density residential into the centre. The *Activity Centre Strategy* identifies potential larger strategic sites for redevelopment on both sides of Doncaster Road and the forecast population increase in the Centre is likely to be about 220 people. The NAC is located in an open space gap area.

### **Balwyn East NAC**

This Activity Centre is located in Balwyn but directly adjoins Balwyn North on the north side of Belmore Road. The *Activity Centre Strategy* identifies that the area within Balwyn North has potential to redevelop into mixed use with retail, office and residential. A forecast additional 67 people are likely to live in the Centre by 2026.

## **8.3.3c Level 3 Neighbourhood Activity Centres (NAC) in Balwyn North**

### **Stradbroke NAC**

Located in the south-west corner of the precinct, this Activity Centre is located along Burke Road and partially within Balwyn North. The extent of redevelopment anticipated in this Activity Centre is not significant with a forecast residential population increase of 23 people by 2026 in the Centre.

### **Belmore Heights NAC**

Located centrally on the southern boundary of the precinct this Activity Centre is located along Belmore Road with Gordon Barnard Reserve and Hislop Park located nearby. This Activity Centre anticipates shop top housing above commercial and retail use, with a forecast residential population increase of 45 people by 2026.

### **Bellevue NAC**

Located on the west side of Bulleen Road, this Activity Centre is located near Columba Street Reserve and Leonis Avenue Reserve. The *Activity Centre Strategy* identifies that this Centre for mixed use will provide opportunities for integrated residential development. The forecast population increase in the Activity Centre is in the order of 150 people by 2026.

### **Boroondara NAC**

Located on both sides of Balwyn Road, this Activity Centre is located between Leigh Park and Minerva Avenue Reserve. The *Activity Centre Strategy* identifies that this Centre will continue to provide limited convenience goods and business services with housing diversity via shop top housing and increased residential density. The forecast population increase is in the order of 166 people.

### **North Balwyn NAC**

Located on both sides of Doncaster Road, this Activity Centre is located wholly within Balwyn North and in an open space gap area. The *Activity Centre Strategy* identifies that this Centre will continue to strengthen its character as a compact fashion retail centre, expanding into mixed use including increased residential density. The forecast population increase in the Centre is in the order of 143 people by 2026.

### 8.3.3d Remainder of suburb

Just over half of the forecast population growth (approx 1,000 people) will be distributed across the balance of Balwyn North outside the Activity Centres. This will result in an increased use and demand on open space across the suburb.

### 8.3.4 Gap areas in open space distribution in Balwyn North

There are some gap areas in the distribution of open space in Balwyn North. Each of these has been numbered and illustrated diagrammatically in Figure 8.3~4, with a brief analysis and conclusion for each gap area described below in Table 8.3(iii).

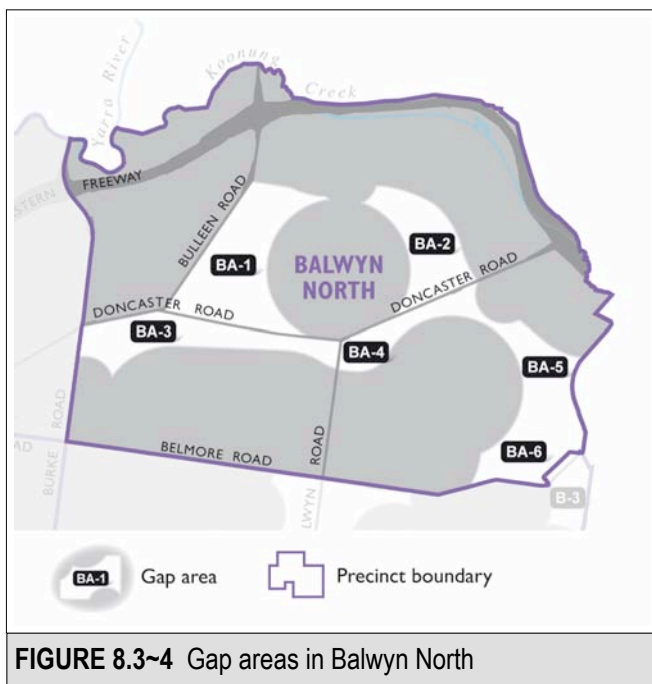


FIGURE 8.3~4 Gap areas in Balwyn North

**Table 8.3(iii) Open space gap areas for Balwyn North**

Gap area	Description	Conclusions gap areas for Balwyn North
BA-1	Located north of Doncaster Road and to the east of Bulleen Road, this gap area has two activity centres located nearby, both of which are forecast to have additional population by 2026.	<ul style="list-style-type: none"> <li>This gap area will be addressed by the future provision of an additional Small Local open space to cater to the needs of the existing and forecast population in this area.</li> </ul>
BA-2	Located north of Doncaster Road, this gap area is generally located east of Walnut Road. It is likely there will be an increase in population density in this gap area as the Greythorn NAC and Boroondara NAC are both located within it.	<ul style="list-style-type: none"> <li>The open space located east of the gap area is Koonung Creek Reserve, which provides good linear open space connectivity. This open space is, however, adjacent to the freeway and impacted by traffic noise.</li> <li>An additional Small Local open space is recommended to be located in this gap area to provide an open space within reasonable walking distance that offers some peacefulness away from traffic noise.</li> </ul>
BA-3	Located south of Doncaster Road, this gap area extends south of Maud Street. It is likely there will be an increased population in this area as	<ul style="list-style-type: none"> <li>While this is a gap area, there is an extensive system of open space located to the south of this area that can be reached without the need to cross major</li> </ul>

Gap area	Description	Conclusions gap areas for Balwyn North
	two activity centres are located nearby.	<p>roads. There are also the Balwyn High and Balwyn North Primary Schools located in this gap area, providing some ancillary open space.</p> <ul style="list-style-type: none"> <li>The focus for this gap area is to improve the pedestrian access south to the existing open space. Additionally it will be necessary to increase the quality and diversity of facilities to cater to increased levels of use.</li> </ul>
<b>BA-4</b>	Located south of Doncaster Road and east of Balwyn Road this gap area generally falls outside of any Activity Centres.	<ul style="list-style-type: none"> <li>As per the conclusion for BA-3, while this area is beyond easy walking distance of existing open space, there are two major areas of open space located to the south and east that are accessible via the residential street network.</li> <li>The focus for this gap area is to improve the pedestrian access south and east to the existing open spaces. Additionally it will be necessary to increase the quality and diversity of facilities to cater to increased levels of use.</li> </ul>
<b>BA-5</b>	Located south of Doncaster Road this gap area is generally east of Greythorn Road. The Greythorn Activity Centre is located nearby this gap area.	<ul style="list-style-type: none"> <li>This gap area is located towards the eastern boundary of the municipality. While there is no open space within Boroondara, there is Winfield Reserve, located immediately east of the boundary in the City of Whitehorse. This reserve provides a shared trail link onto the Koonung Creek Trail with off-road access to open space to the east and west.</li> <li>If positioned correctly, open space provided in Gap Area BA-6 will potentially be accessible for the population in Gap Area BA-5 as well.</li> <li>Improving pedestrian access to this and also west to Greythorn Park via the residential street network is recommended at this stage.</li> </ul>
<b>BA-6</b>	This gap area is located south of Gap Area BA-5 and north of Belmore Road, close to the Balwyn East Activity Centre.	<ul style="list-style-type: none"> <li>There is a need to provide additional Local open space in the north of this gap area to address Gap Area BA-6 and BA-5. If a Local open space land area cannot be achieved, provision of two Small Local open spaces is recommended as an alternative.</li> </ul>

## 8.3.5 Balwyn North Actions

### 8.3.5a Summary of overall intent

#### Provision and distribution

Parts of Balwyn North are well provided with open space particularly along the waterways and in the southern parts of the precinct. Other areas require additional open space to be established in the future to address some gap areas, to provide safe and easy access to open space. Other gap areas will be addressed by improving the pedestrian amenity in the local residential street network, and improving the provision of informal facilities' and access into existing open spaces, some of which are primarily sporting reserves.

#### Quality and design

The recommendations include improvements to some of the existing open spaces to ensure the open space contributes to the physical and mental health and wellbeing of the existing and forecast population. This includes encouraging the addition of informal and unstructured recreational activities to some of the larger open spaces in the precinct, along with improving the diversity of facilities provided in others. This will be balanced with the need to improve the environmental quality and values in open space.

### 8.3.5.b Precinct Actions for Balwyn North

The priorities shown in the Action tables are indicative only. The priorities provide guidance on the expected sequence and timeframes for the commencement of actions and may change pending the allocation of suitable funding and resources, along with the actual rate and location of forecast future land use trends and development. Many of the actions will be staged and delivered over a number of years extending beyond the timeframe in which they commenced.

#### A Additional open space

No.	Action	Responsibility	Priority
8.3A-1	Provide additional Small Local open space in gap area BA-1 to address the needs of both the existing and forecast population.	Council & Developer	Very High
8.3A-2	Provide an additional Small Local open space in Gap Area BA-2 to address the open space needs of both the existing and new population, particularly in a location that is peaceful and away from traffic noise.	Council & Developer	Very High
8.3A-3	Provide an additional Local open space to address Gap Areas BA-5 and BA-6, within walking distance of the Greythorn and Balwyn East Activity Centres. Alternatively, provide two additional Small Local open spaces if the land area for a Local open space cannot be achieved.	Council & Developer	Very High

## B Open space links

No.	Action	Responsibility	Priority
8.3B-1	Investigate the need to make any improvement to the pedestrian and cycle amenity in the local street network from Gap Area BA-3, south of Doncaster Road and west of Balwyn Road to improve access to open space in the south of this precinct which includes Macleay, Myrtle and Hislop Parks.	Council	High
8.3B-2	Investigate the need to make any improvement to the pedestrian and cycle amenity in the local street network from Gap Area BA-4, south of Doncaster Road and east of Balwyn Road to improve access to open space nearby including Gordon Barnard Reserve and Greythorn Park.	Council	High
8.3B-3	Investigate the need to make any improvement to the pedestrian and cycle amenity in the local street network from Gap Area BA-5, south of Doncaster Road west towards Greythorn Park.	Council	High

### 8.3.5c Individual open space Actions for Balwyn North

The reserves are listed in alphabetical order in each hierarchy type.

## C Regional open space

No.	Action	Responsibility	Priority
8.3C-1	<b>Boroondara Tennis Club</b> Continue to maintain this for sporting purposes.	Council	Ongoing
8.3C-2	<b>Columba Street Reserve</b> Prepare and implement a concept master plan to guide future upgrades and improvements to provision of local neighbourhood level unstructured and informal recreational facilities for the existing and forecast population in this area.	Council	High
8.3C-3	<b>Koonung Creek Reserve</b> Continue to maintain this reserve as informal open space. Minor upgrades include installation of additional seats and ongoing improvement of environmental values.	Council	Ongoing
8.3C-4	<b>Leonis Avenue Reserve</b> Review the Koonung Creek shared trail alignment through this reserve.	Council	Medium
8.3C-5	<b>Musca Street Reserve</b> Prepare and implement a concept master plan to guide future minor upgrades and improvements to the provision of local neighbourhood level unstructured and informal recreational facilities in this reserve for the existing and forecast increased population.	Council	Medium
8.3C-6	<b>Orion Street Reserve</b> Continue to maintain as linear open space and investigate to improve indigenous vegetation values.	Council	Ongoing

No.	Action	Responsibility	Priority
8.3C-7	<b>Winfield Road Reserve</b> Continue to maintain as part of the Koonung Creek Trail open space.	Council	Ongoing
8.3C-8	<b>Yarra Flats Reserve (East)</b> Continue to maintain this open space reserve for linear trail access. Continue to liaise with Melbourne Water regarding improvements to the environmental values of the riparian zone.	Council (MW)	Ongoing

## D Municipal open space

No.	Action	Responsibility	Priority
8.3D-1	<b>Gordon Barnard Reserve</b> Continue to implement the remaining relevant actions from the Master Plan. Additionally, upgrade the unstructured recreational access and facilities to provide for the existing and also the forecast new population. This may include installation of additional walking paths, seats, shade trees, activities for older people, angled car parking along Tovey Street for playground access and a new pedestrian crossing access between the reserve and Hislop Park along Balwyn Road.	Council	Medium
8.3D-2	<b>Greythorn Park</b> Continue to implement the existing Master Plan.	Council	Ongoing
8.3D-3	<b>Hislop Park</b> Continue to maintain as a sporting reserve. Investigate installation of a walking path along the perimeter of the reserve to provide east-west connection through the park.	Council	Low
8.3D-4	<b>Leigh Park</b> Continue to maintain as a sporting reserve. Investigate installation of a walking path around the existing oval and review the potential to increase the diversity of facilities to cater for increased use, including additional seats, toilets and play equipment for a range of age groups.	Council	Medium
8.3D-5	<b>Macleay Park</b> Prepare and implement a concept master plan for this park and the adjoining Myrtle Park, primarily to investigate opportunities to improve the access and facilities for a diverse range of the community, while retaining existing structured sporting uses. This is primarily to cater to the forecast population in this precinct including those in the gap area to the north of these reserves, and the existing population who identified they frequently use this open space and noted suggested improvements.	Council	Very High
8.3D-6	<b>Myrtle Park</b> Continue to maintain as a sporting reserve, and refer to Action 8.3D-5.	Council	Ongoing

## E Neighbourhood open space

No.	Action	Responsibility	Priority
8.3E-1	<b>Jacka Street Reserve</b> Continue to maintain this open space.	Council	Ongoing

## F Local open space

No.	Action	Responsibility	Priority
8.3F-1	<b>Cascade Street Reserve</b> Continue to maintain this open space.	Council	Ongoing
8.3F-2	<b>Nicholson Street Reserve</b> Continue to maintain this open space reserve as a linked open space system.	Council (MW)	Ongoing

## G Small Local open space

No.	Action	Responsibility	Priority
8.3G-1	<b>Eva Tilley Reserve</b> Continue to maintain.	Council	Ongoing
8.3G-2	<b>Gould Street Reserve</b> Continue to maintain this open space link.	Council	Ongoing
8.3G-3	<b>Kyora Parade Reserve</b> Continue to maintain this small open space for informal use and character.	Council	Ongoing
8.3G-4	<b>Millicent Avenue Reserve</b> Continue to maintain this open space link.	Council	Ongoing
8.3G-5	<b>Prose Street Reserve</b> Continue to maintain this open space link	Council	Ongoing
8.3G-6	<b>Rumpf Avenue Reserve</b> Minor upgrade to provide path access, seating and additional trees.	Council	Medium

## H Small Local Link open space

No.	Action	Responsibility	Priority
8.3H-1	<b>Minerva Avenue Reserve</b> Continue to maintain this open space link	Council	Ongoing
8.3H-2	<b>Ray Drive Reserve</b> Continue to maintain this open space link	Council	Ongoing